

# Tuskegee and the Health of Black Men

Marcella Alsan\* and Marianne Wanamaker<sup>†\*</sup>

\*Stanford University and NBER

<sup>†</sup>The University of Tennessee, IZA, and NBER

April 2017

## Abstract

**JEL Codes:** I14, O15 For forty years, the Tuskegee Study of Untreated Syphilis in the Negro Male passively monitored hundreds of adult black males with syphilis despite the availability of effective treatment. The study's methods have become synonymous with exploitation and mistreatment by the medical profession. We find that the disclosure of the study in 1972 is correlated with increases in medical mistrust and mortality and decreases in both outpatient and inpatient physician interactions for older black men. Our estimates imply life expectancy at age 45 for black men fell by up to 1.5 years in response to the disclosure, accounting for approximately 35% of the 1980 life expectancy gap between black and white men and 25% of the gap between black men and women.

---

\*We thank the editor, Lawrence Katz, and four anonymous reviewers for constructive comments that improved the paper. For detailed feedback at an early stage of our work, we thank Nathan Nunn, Arun Chandrasekhar, Martha Bailey, Pascaline Dupas and William Collins. We are also grateful to John Parman, Achyuta Adhvaryu, Rebecca Diamond, Claudia Goldin, Melanie Morten, Mark Duggan, Mark Cullen, Melissa Dell, Nancy Qian, Ran Abramitzky, Rema Hanna, Grant Miller and seminar participants at NBER DAE, NBER Cohort Studies, University of Tennessee, Vanderbilt Health Policy, Carnegie Mellon and University of Pittsburgh Joint Seminar, University of Copenhagen, University of Pennsylvania Health Policy, ASSA 2016, PACDEV 2016, Berkeley Population Center, University of Chicago Harris School of Public Policy, Stanford Health Policy, University of California-Davis, University of Maryland Population Center, Stanford Social Science and History Workshop, University of South Carolina, Florida State University, University of Richmond, Highland Hospital of Oakland, Dartmouth College, Harvard Medical School, University of Michigan, University of California Berkeley, Simon Fraser University and CIREQ Montreal for constructive comments. We thank the CDC for providing access and the administrators at the Atlanta and Stanford Census Research Data Centers for their help in navigating the restricted data. We thank Michael Sinkinson, Martha Bailey, Andrew Goodman-Bacon and Walker Hanlon for sharing data and methods. Mario Javier Carrillo, Anlu Xing and Afia Khan provided excellent research assistance. Address of corresponding author: 117 Encina Commons Room 186 Stanford, CA 94305 email: malsan@stanford.edu

# 1 Introduction

The Tuskegee Study became a symbol of their mistreatment by the medical establishment, a metaphor for deceit, conspiracy, malpractice, and neglect, if not outright genocide.

Corbie-Smith *et al* (1999)

African-American men have the worst health outcomes of all major ethnic, racial, and demographic groups in the United States.<sup>1</sup> Although recent trends have shown signs of improvement, particularly at younger ages, the gradients for older men are still sobering: the expectation of life for black men at age 45 is three years less than for their white male peers and five years less than for black women (Murphy *et al.*, 2013). Compared to other demographic groups, black men have higher death rates from chronic conditions such as HIV/AIDS, heart disease, and cancer, including lung, prostate, and colon (Kaiser Family Foundation Fact Sheet, 2007). Many factors contribute to such disparities, including lower income and education, lack of health insurance, and higher rates of disengagement from the labor force. But socioeconomic status is not fully determinant of these gaps (Adler *et al.*, 1993; Cutler *et al.*, 2011), and a growing body of qualitative literature suggests that mistrust of healthcare institutions partially contributes to these inequities. Yet empirical evidence on the causal role of medical mistrust for racial health disparities remains thin.

This study uses the historical disclosure of an unethical and deadly experiment, the Tuskegee Study of Untreated Syphilis in the Negro Male (TSUS), to identify the relationship between medical mistrust and racial disparities in health-related behaviors and health outcomes. For 40 years, between 1932 and 1972, the U.S. Public Health Service (PHS) followed hundreds of poor, black men in Tuskegee, Alabama, the majority of whom had syphilis, for the stated purpose of understanding the natural course of the disease. The men were denied highly effective treatment for their condition (most egregiously, penicillin, which became standard of care by the mid-1940s) and were actively discouraged from seeking medical advice from practitioners outside the study (Brandt, 1978). Participants were subjected to blood draws, spinal taps, and, eventually, autopsies, by the study's primarily white medical staff. Survivors later reported that study doctors diagnosed them with "bad blood" for which they believed they were being treated.<sup>2</sup> Compensation for participation included hot meals, the guise of treatment, and burial payments. News of the Tuskegee Study became public in 1972 in an exposé by Jean Heller of the Associated Press, and detailed narratives of

---

<sup>1</sup>For a comprehensive review of racial inequalities in U.S. medical care, see Smedley *et al.* (2003).

<sup>2</sup>As an example of this outright duplicity, Brandt (1978) quotes a letter subjects received exhorting them to participate in (the often painful) spinal tap procedure: "Some time ago you were given a thorough examination and since that time we hope you have gotten a great deal of treatment for bad blood. You will now be given your last chance to get a second examination."

the deception and its relationship to the medical establishment were widespread. By that point, the majority of the study's victims were deceased, many from syphilis-related causes.

In the years following 1972, journalists, social scientists, and medical researchers have repeatedly pointed to the Tuskegee experiment as a reason African-Americans remain wary of mainstream medicine.<sup>3</sup> For example, as HIV disproportionately ravaged black communities in the U.S., a number of observers conjectured that the Tuskegee Study's legacy had hampered public health education efforts in the black community, contributing to the epidemic's spread (Gaston and Alleyne-Green, 2013). A recent resurgence of tuberculosis in Marion County, Alabama is similarly attributed (Blinder, 2016). Qualitative research aimed at understanding the reluctance of black men, in particular, to participate in medical research or engage in preventive care often produces unprompted reference to Tuskegee (Corbie-Smith et al., 1999). In sum, the Tuskegee Study is an often-cited contributor to delays and avoidance in care seeking, wariness of public health campaigns, low participation in clinical trials, and overall worse health indicators among black men.

To empirically investigate whether the study's disclosure contributed to racial disparities in health and healthcare utilization in the years following 1972, we rely on a variety of survey and administrative data, including measures of trust in doctors from the General Social Survey (GSS) (Smith et al., 2015), health seeking behavior reported in the National Health Interview Survey (NHIS) (Minnesota Population Center, 2015), and mortality data available by race, age group, gender, and cause from the Centers for Disease Control and Prevention (CDC) (CDC, 2014). We focus our attention on these measures for older (45-74) individuals, using other age groups as placebo tests since the mortality and health-seeking behavior of younger individuals is generally driven by acute conditions such as childbirth or trauma in which the needs for care are urgent and the benefits immediate.<sup>4</sup> Further, because mistrust is more likely to discourage preventive and non-emergency medical care, we report results for both all-cause mortality and chronic disease mortality outcomes.

In order to generate testable predictions beyond those implied by the timing of the disclosure in 1972,

---

<sup>3</sup>James H. Jones reflected on what motivated him to write *Bad Blood: The Tuskegee Syphilis Experiment*: "First and foremost, I wanted to examine the role of race in medicine. Specifically, I sought to learn how racial attitudes affected the perception of disease that white physicians brought to their African American patients, and having done so, I wanted to learn how those attitudes altered the ways in which white physicians responded to disease in the black community. Scholars had taught us a great deal about race and politics, race and social structure and race and the economy. But we knew very little about the relationship between race and medicine. The Tuskegee Syphilis Study, I was convinced, was a critical case that could help to fill this lacuna," as quoted in Brandt and Churchill (2000, p.xii).

<sup>4</sup>Injuries and violence are the leading cause of death for children and young adults between ages 1 and 44 (CDC, 2010). For the GSS, we use those who were at least 10 years old at the time of the study disclosure.

we use race and sex as additional treatment indicators. This approach is based, in part, on the supposition that individuals for whom the news of the Tuskegee Study's abuses was more salient should exhibit a more robust behavioral response. Economic models of trust formation and social identification (Dixit, 2003; Shayo and Zussman, 2011; Tabellini, 2008) and a vast psychology literature (Gutsell and Inzlicht, 2010; Singer et al., 2006) indicate that individuals tend to be more affected by news if they can identify with the subject. Further, we posit that individuals might perceive themselves at higher risk of medical mistreatment if they share socio-demographic characteristics with the study's subjects. In this view, the Tuskegee abuses became a signal for how black men might expect the medical system to treat them. A simple Bayesian, multi-period model of belief formation regarding physician trustworthiness (contained in the Appendix) implies that, under certain conditions, agents having previous experience with the medical system, e.g., child-bearing women, are less dissuaded by the news, again implying stronger responses among men than women.<sup>5</sup>

As a final exposure to treatment, we interact these demographic characteristics with a location-based measure of proximity: geographic distance to the Tuskegee Study's abuses. In doing so, we test whether black men living in closer proximity to the population from which the sample was drawn were more heavily influenced by the TSUS revelation. Such a pattern could be observed if, for example, men believe the event is more instructive for how they may anticipate being treated by their local medical system. For an alternative proximity measure, we substitute the share of black migrant inflows from the state of Alabama to an individual's local geography. The Great Migration was characterized by strong chain migration and by substantial amounts of return migration such that individuals living in locations with higher rates of black migration from Alabama would have experienced a lasting information network, in addition to any additional salience arising from these connections.

We test these hypotheses using an interacted Difference-in-Difference-in-Differences framework that captures post-1972 changes in the racial and gender gaps in healthcare utilization and health outcomes for those in varying proximity to the event. Whenever feasible, we condition on a rich set of control variables found to be correlated with individual health seeking behavior, including education (Aizer and Stroud, 2010; Alsan and Cutler, 2013; Cutler and Lleras-Muney, 2012; Cutler et al., 2014), income (Deaton, 2002), marital

---

<sup>5</sup>Our study also distinguishes between the non-veteran and veteran population of men for the same reasons. The baseline utilization samples do not include veteran males, but we do not observe veteran status in the mortality files. Unmarried black women, having borne fewer children and likely possessing less experience with healthcare settings, also demonstrated decreased utilization compared to their unmarried white female peers. In our model of medical mistrust, we consider Bayesian updating as the benchmark, although behavioral models could deliver similar results (e.g. Becker and Rubinstein, 2011).

status (Robles and Kiecolt-Glaser, 2003; Holt-Lunstad et al., 2008), and urbanization. Race-gender-location, race-gender-time and location-time fixed effects non-parametrically control for time-invariant factors that influence outcomes for a specific demographic group in a given locale and for changes in public health and other government policies that might have differentially affected members of each group in each year. The finest level of geography observable in the utilization regressions is a respondent's state, and we use observations at the county or state economic area level for mortality outcomes. We focus on the short- and medium-term impact of the disclosure on health behaviors and outcomes; given the data limitations, persistent causal impacts are more difficult to identify.

Our estimates imply that a one-standard deviation increase in geographic proximity to Macon County, Alabama, reduced utilization of routine care (outpatient physician contacts) among older black males by 0.90 interactions per year, a 22% reduction in utilization relative to the pre-disclosure mean value for black men. These utilization effects are driven by the behavior of black men with lower levels of education and income. We also find weaker evidence of a reduction in the probability that black men were admitted to the hospital, though their length of stay was significantly longer, consistent with more advanced disease upon presentation. Mortality outcomes indicate that a one standard deviation increase in geographic proximity to Tuskegee was associated with a spike in the post-1972 age-adjusted mortality penalty for black men of 4 log points. Our estimates imply that the Tuskegee Study disclosure contributed to widening health disparities between 1970 and 1980, accounting for approximately 35% of the 1980 life expectancy gap between black and white men and 25% of the gap between black men and women.

An alternative explanation for our findings is that access to healthcare was deteriorating for blacks relative to whites in this period, particularly in the South, and black men were precluded from obtaining routine medical care regardless of their underlying demand. But this explanation is inconsistent with other research concluding that access to health services for black Americans improved substantially in the years immediately after the Civil Rights Act, resulting in an overall reduction in racial health disparities during this period. The implementation and expansion of Medicaid and Medicare (Goodman-Bacon, 2015), the desegregation of hospitals (Almond et al., 2006; Zheng and Zhou, 2008), and political enfranchisement, which led to an increase in the flow of public goods to black communities (Cascio and Washington, 2014) all contributed to this change.<sup>6</sup> Our estimates imply that the Tuskegee revelation stalled the overall pattern of convergence for older black men, producing a drag on healthcare utilization for this specific demographic

---

<sup>6</sup>For an historical account of U.S. black-white health disparities, see Boustan and Margo (2014).

group and contributing to an abrupt divergence in their mortality patterns.

We pursue a number of strategies to provide further evidence that the correlations we find are indeed causal. First, the results we find are specific to black men; coefficient estimates for the post-1972 treatment effect of being "black and female" or "white and male" in closer proximity to Macon County, Alabama, are generally not economically or statistically significant, do not exhibit an observable break in 1972, and are often opposite-signed to the main treatment effects. The fact that black women exhibit utilization and mortality outcomes that do not follow the pattern for black men indicates it is unlikely our results are picking up differential access to social programs after 1972 for blacks living in the South, and our findings are robust to estimation on a within-South sample. In additional permutation tests, we show that the baseline coefficients for mortality (utilization), based on geographic proximity to Macon County, Alabama, are larger (smaller) than 96% to 97% of placebo tests substituting proximity to all other geographies in the dataset. Thus the effects we measure are specific to black men and to geographic proximity to central Alabama, not to a post-1972 condition affecting the South overall.<sup>7</sup>

Finally, to evaluate whether the behavioral responses we observe are driven by medical mistrust, we utilize survey data from the 1998 wave of the GSS on whether individuals trust a doctor's judgment and whether they suspect that the medical establishment will deny them necessary treatment or services. When we interact race and gender indicators with a measure of the distance of an individual from Macon County, Alabama, we find the same geographic gradient apparent in our baseline utilization and mortality results. This geographic gradient in mistrust is not present for general mistrust as revealed in the respondents' answers to other survey questions.

This paper builds on and contributes to several literatures in economics. First, our findings elucidate factors influencing healthcare demand and medical outcomes among minorities in the United States and deepen our understanding of how this watershed event affected the relationship between black Americans and the U.S. healthcare system. Second, and more broadly, our study is motivated by the theoretical contributions of Guiso et al. (2008) regarding the transmission and updating of beliefs and empirical work by Nunn and Wantchekon (2011) regarding the role of previous exploitation in shaping interpersonal mistrust in Africa.

---

<sup>7</sup>Furthermore, the addition of high frequency county-level data on transfer payments related to healthcare and disability (e.g. Medicare, Medicaid, and Social Security) does not materially affect results, and we find no evidence that expenditure levels for these social programs exhibited a temporal or geographic pattern mirroring our main empirical results (see Appendix Table 7 and Appendix Figure 8). Alternatively, there may have been other factors, such as high unemployment of unskilled labor or mass incarceration, correlated with proximity to Tuskegee, Alabama that disproportionately affected the mortality and healthcare utilization of black men. Again, however, conditioning on a rich set of individual and location-specific socioeconomic characteristics, including unemployment and incarceration rates, does not affect our estimates (see Appendix Table 5).

Our findings also connect to rich empirical evidence on the importance of trust for economic development (Knack and Keefer, 1997; Fafchamps, 2006). Finally, these findings shed light on questions in development economics regarding low demand for products that have been shown to improve health (Dupas, 2011; Chapter 3 of Banerjee and Duflo (2011)). The findings presented herein suggest that historical exploitation and its enduring impact on beliefs may explain some of the uptake paradox.

## 2 Context

The following section places the study in historical and medical context by providing background on the pathology of syphilis and the TSUS experiment, prior literature on the Tuskegee "Legacy", and health patterns across demographic groups in the years surrounding the disclosure.

### 2.1 Background on the Tuskegee Study

The Tuskegee Study was designed to trace the course of untreated syphilis in black men. The organism that causes the disease is related to that causing Lyme disease, and both bacteria manifest themselves in stages. The first stage of sexually acquired syphilis is often an ulcer, followed by a full body rash that includes the palms and soles. However, it is the tertiary (or late-stage) syphilis that inflicts the most damage. The third stage is characterized by gummas (syphilitic tumors teeming with the bacteria) which coalesce and eat away at bone (frequently the nasal bridge) as well as other organs and show a predilection for the arch of the aorta often leading to hemorrhage. Neurosyphilis (an attack on the nervous systems) presents in late-stage syphilis with paresis, gait disturbance, blindness, and dementia (Mandell et al., 2009).<sup>8</sup>

According to Jones (1992), much of the natural history of syphilis outlined above was known at the time the study commenced:

"The germ that causes syphilis... and the complications that can result from untreated syphilis, were all known to medical science in 1932 – the year the Tuskegee Study began. Since the effects of the disease are so serious, reporters in 1972 wondered why the men agreed to cooperate. The press quickly established that the subjects were mostly poor and illiterate, and the PHS had offered them incentives to participate."

---

<sup>8</sup>Syphilis can also be transmitted mother to child and cause severe congenital problems, including stillbirth.

These incentives included physical exams, hot meals, and burial stipends that would be paid to their survivors. Most of the men also believed they were receiving some form of treatment. Approximately 600 black men (~2/3 of whom had syphilis) were recruited to the study using these techniques and followed passively for forty years while the disease took its toll.

In 1972, news of the Tuskegee Study was leaked to the press and quickly spread, including reporting from the *New York Times*, the *Los Angeles Times*, via the Associated Press wire, on broadcast television, and, of course, by word of mouth. The study was halted that same year, but few of the original test subjects were alive and dozens of their wives and children had been infected (Heintzleman, 2003). Medical historian Allan Brandt (1978) summarizes the study as follows: "In retrospect the Tuskegee Study revealed more about the pathology of racism than the pathology of syphilis; more about the nature of scientific inquiry than the nature of the disease process. . . . The degree of deception and the damages have been severely underestimated." Those damages may include a legacy of medical mistrust among black Americans. The Final Report of the Tuskegee Syphilis Study Legacy Committee (1996) noted that "the Study continues to cast a long shadow over the relationship between African-Americans and the biomedical professions," and was "a significant factor in the low participation of African-Americans in clinical trials, organ donation efforts, and routine preventive care." <sup>9</sup>

Despite the Committee's conclusions, the empirical evidence of a link between the Tuskegee Study and medical mistrust has been mixed and suffers from several limitations. First, and perhaps most crippling, all quantitative and qualitative studies of the relationship between medical mistrust and awareness of Tuskegee's abuses are dated 20 or more years after 1972. By this time, the link between medical mistrust and knowledge of Tuskegee may have faded for a number of reasons, including a socialization of mistrust without an accompanying socialization of the relevant history.<sup>10</sup> Second, a correlation between medical mistrust and knowledge of the Tuskegee Study provides no information on the direction of causation; distrustful individuals may do more to collect information on past abuses. Third, the extant literature focuses on participation in clinical trials rather than medical mistrust *per se*. Although these outcomes are likely to be correlated, it is

---

<sup>9</sup>This lack of minority representation in clinical trials may have important spillover effects, including on the speed and direction of innovation for ailments that heavily afflict their communities. See Hamilton et al. (2016) for a structural estimation of these losses.

<sup>10</sup>Vann Newkirk II highlights the cultural role of Tuskegee, even in the absence of specific details, saying: "Like me, several other black men that I interviewed throughout the rural South were either inculcated from birth or from experience living in 1972 with the idea that the American health-care system is not for them. Young boys and old men felt it alike, and even if the Tuskegee Study was not known by name, it was a definite part of a vivid shared cultural memory. References to injection of 'bad blood', government research, or conspiracies about HIV were clearly influenced by details of Tuskegee, even if the details weren't always quite right." (Newkirk, 2016)



the mistrust of care providers that directly impacts health conditions. Finally, samples used in these studies are frequently restricted to particular geographies.

With these qualifications in mind, the earliest quantitative study on this topic is from 1994 (22 years following the disclosure). Researchers surveyed residents of Jefferson County, Alabama (Green et al., 1997). Although 55% of the sample held knowledge of the Tuskegee Study, and the rate was no higher for black men and women than for whites, knowledge of the study by black men increased with age, reaching 74% for those aged 46-64 (who would have been 24-42 at the time of the study). The sample's age distribution differed substantially by race, and the survey write-up does not include a conditional relationship between race, age, sex, and knowledge of Tuskegee, nor does it give a conditional relationship between willingness to participate in health research and Tuskegee knowledge. But unconditional cross tabulations indicate that 27% of black men were less interested in participation as a result of the study, compared to 20% of black women and 10% of whites. Among all African Americans (male and female), this disinterest was highest for individuals with a high school degree, but no college, and among those aged 31-65. Sample sizes here are quite small, however, so caution is warranted. These survey responses also indicate significant racial gaps in respondents' perceptions of the fairness of medical care and research.<sup>11</sup>

In addition to the Green et al. study, Brandon et al. (2005) surveyed 401 black and white adults living in Baltimore, Washington D.C. and New York City in 2003 and found that blacks were far less likely to report knowledge of Tuskegee than whites (74% vs. 25%), a statistic uncovered by White (2005) in his critique of their paper. This result, along with the survey's high refusal rate, led White to cast doubt on the study's methods. Brandon et al. also reported that blacks with knowledge of the study were 50% more likely to believe the PHS researchers injected the men with syphilis (75.3% vs. 52.8%) and to believe Tuskegee could "occur today" (76.6% vs. 47.2%). In this study, medical mistrust was positively related to black race, male sex and lower education, but not significantly related to knowledge of the Tuskegee Study. Shavers et al. (2000) found the opposite: a greater unwillingness to participate in medical research among blacks who knew about the study. The Tuskegee Legacy Project of 2003 which interviewed black, white, and Hispanic men and women in Baltimore, Washington D.C., and San Juan, Puerto Rico found that blacks were more likely to have a higher "guinea pig fear factor" (GPFF) score than whites and were more likely to have knowledge of the Tuskegee Study than whites or Hispanics (56.2% vs. 38.5% and 24.3%, respectively)

---

<sup>11</sup>For example, 75% of black men believed that "African Americans are more likely to be treated poorly in health research studies" compared to 58% of black women and 37% of whites.

(McCallum et al., 2006).

As best we can ascertain, Freedman (1998) is the earliest qualitative research on the relationship between medical research mistrust and the Tuskegee Study. Freedman asserts that the Tuskegee legacy is not enough to fully explain racial differences in participation in medical research, yet cites interviewees who "explicitly and vividly expressed [their unwillingness to participate in medical studies] in connection with the Tuskegee Syphilis Experiment. Perhaps most tragically, mistrust associated with the Tuskegee Study has been linked with take-off of the HIV/AIDS epidemic in minority communities. According to Quinn (1997), the *New York Times* published poll results wherein blacks were more likely to believe in conspiracy theories related to HIV/AIDS, including that the virus was a genocide tool designed to limit the number of blacks in America.<sup>12</sup> (These results have been replicated many times over.) Resulting letters to the editor "clearly placed the origin of such attitudes within the historical context of the Tuskegee Syphilis Study". At the height of the HIV/AIDS crisis in the US, health publications implored medical professionals to directly confront these conspiracy theories with facts, and correct the common misconception that the Tuskegee abuses included infecting study's subjects with syphilis. "Public health professionals must recognize that Blacks' belief in AIDS as a form of genocide is a legitimate attitudinal barrier rooted in the history of the Tuskegee Syphilis Study" (Thomas and Quinn, 1991).

In addition to specific Tuskegee legacy studies, the public health literature provides ample documentation that being black *and* male is an important predictor of health disparities, including those in life expectancy, survival rates within disease category, and health-promoting behavior. Black men are less likely to know their cholesterol levels, engage in blood pressure monitoring, or otherwise benefit from early detection of chronic conditions than their white male peers (Sandman et al., 2000; Viera et al., 2006).<sup>13</sup> Although reasons for these disparities are multifactorial, the legacy of medical exploitation (represented in part by the Tuskegee Study) has led to research on whether medical mistrust is particularly heightened among black men (Carlson and Chamberlain, 2004). Indeed, black men exhibit higher levels of medical mistrust, which are correlated with reduced probabilities of preventive and early-stage disease care (Boulware et al., 2003; Wiltshire et al., 2011; Hood et al., 2012). For example, Hammond et al. (2010) recruited 600 African-American

---

<sup>12</sup>Additional beliefs were that "HIV was deliberately created in a laboratory in order to infect black people, that AZT is a plot to poison them, that condom distribution campaigns are a scheme to reduce the number of black babies, and that needle distribution programs are a plot to encourage drug abuse," Quinn (1997, page S-7). Similar Tuskegee-attributed mistrust related to the origins of the HIV virus emerged in a 1996 ABC News 20/20 forum and in a 1997 Atlanta-based forum audience.

<sup>13</sup>The life expectancy gap between black and white men can be substantially reduced by controlling for stage at diagnosis. See American Cancer Society (2008, 2009) and Silber et al. (2014).

men from barber shops across the country for the purpose of assessing predictors of self-reported delays in medical care. The most important measured factor was medical mistrust, which was associated with doubled or tripled odds ratios of delays in routine checkups and in blood pressure and cholesterol screenings.<sup>14</sup> This finding echoes others in the literature related to primary care underutilization (Thom et al., 2006; Hertz et al., 2005; Nelson et al., 2002; Keating et al., 2004; Halbert et al., 2006). Medical mistrust among black men is also correlated with poor compliance with treatment plans, conditional on diagnosis for a range of diseases including HIV/AIDS, cancer and hypertension (Halbert et al., 2009; Kayaniyil et al., 2009; LaVeist et al., 2000; Do et al., 2010; Thomas, 2013).<sup>15</sup>

## **2.2 Patterns of Healthcare Utilization and Mortality**

Prior to the Tuskegee experiment revelation, the 1960s marked an era of rapid convergence in healthcare access and utilization for black Americans relative to whites. Hospitals gradually integrated over the 1950s and early 1960s, a process that culminated not with the Civil Rights Act of 1964, but with President Lyndon Johnson's insistence that any hospital receiving Medicare funding fully desegregate by July 1966. This process was quicker in the North than in the South; separate hospital wings were present in 75% of hospitals in the South as late as April of 1966. Still, full compliance appears to have been achieved by July of the same year. These decades also witnessed expansions in public health insurance coverage and services, some of which favored black Americans, including the establishment of Medical Assistance for the Aged (a precursor to Medicaid), establishment of and expansions in Medicare and Medicaid (Goodman-Bacon, 2015), local health center construction (Bailey and Goodman-Bacon, 2015), and the expansion and funding of public hospitals.

By 1970, black Americans had gained substantial ground in terms of healthcare utilization, even if the quality of the services they acquired lagged behind their white peers.<sup>16</sup> Using data from the NHIS, among individuals ages 45 to 74 the percentage of black women who had did not have contact with a

---

<sup>14</sup>The authors were motivated to study medical mistrust as a potential predictor of preventive health seeking behavior because it "is higher among African-Americans" and "is linked to visible incidents of race-based malice towards this group (e.g. The Tuskegee Study of Untreated Syphilis in the Negro Male)."

<sup>15</sup>In a 2016 study of low adherence to antiretroviral treatment among HIV-positive black men, researchers documented that 63% of the study's subjects held a "conspiracy belief", for example that the federal government was responsible for HIV's introduction into the black population. These beliefs, in turn, were associated with a reduced likelihood of adhering to a physician-prescribed treatment regimen (Bogart et al., 2016).

<sup>16</sup>Blacks were more likely than whites to utilize public and community-based healthcare resources, including charity clinics, public health departments, community health centers, and city and county hospitals and less likely to make use of private and non-profit hospitals. Some of this difference was the result of rapid suburbanization of the white population (Byrd and Clayton, 2002, p. 391).

medical professional within the past year declined between 1963-64 and 1967-68 by about 7 percentage points. The gains for black men were similarly impressive; the same metric declined by 9 percentage points. These increases were three times as large as the declines experienced by white males and females over the same time period.<sup>17</sup> Another consistently measured indicator for healthcare utilization found on various expenditure surveys is whether an individual has an "usual source of care". In 1963, black men reported having a usual source of care as often as white men and black women (University of Chicago Center for Health Administration Studies National Opinion Research, 1963). Data from the National Hospital Discharge Survey demonstrate that in the late 1960s and early 1970s, the average length of stay (LOS) for non-white ("all other" race) patients was much longer than their white peers, consistent with generally poorer health status on admission. Yet racial gaps in average LOS were declining monotonically for both men and women in the period prior to 1972 (U.S. Department of Health Education and Welfare, 1973).<sup>18</sup>

The convergence of black and white healthcare utilization rates in the years prior to the Tuskegee disclosure are closely mirrored by convergence in mortality rates. Using CDC-provided annual county-level mortality statistics by age, race, and gender, as described above, we plot the racial difference in age-specific mortality rates (ASMR) (black minus white) for both men (solid line) and women (dashed line) in Figure 1. Panels (A) and (B) demonstrate that, for infants and children 1 to 4 years of age, there was a marked reduction in racial health disparities that continued, uninterrupted, after the 1972 disclosure. But the pattern for adult mortality is starkly different. Panels (C) and (D) plot the same data for adults aged 55-64 and 65-74. At these ages, convergence at the beginning of the period is followed by a striking divergence in the mortality rates for black men relative to white men beginning in the early 1970s, a pattern which is not reflected in the differences between black and white women. The mortality patterns for other ages (contained in Appendix Figure 2) mimic those for infants and children.<sup>19</sup> Unlike younger ages, where parental behavior (for early childhood) and unintentional injuries (for young adults) play key roles in determining mortality, premature and preventable mortality in older adults is more frequently driven by health behaviors and physi-

---

<sup>17</sup>The level of utilization for black (and white) men is lower than for women in every period. Note that we do not have a continuous series of outpatient utilization data in the pre-1969 period.

<sup>18</sup>By 1977, the percent of black men reporting a usual source of care had declined to 78% in contrast to white men and black women who reported consistent or improvements relative to the 1960s (University of Chicago Center for Health Administration Studies National Opinion Research, 1963, 1970; National Center for Health Statistics, 1977; Ronald Andersen and Ann Lu, 1975; U.S. Department of Health and Human Services, 1987). Similarly, discharge data demonstrates that the gap in average LOS continued to narrow for black vs. white women after 1972 but widened for black men relative to white men.

<sup>19</sup>The Appendix also contains figures for Southerners alone (Appendix Figure 1). In Appendix Figure 2, younger black men exhibit an increase in relative mortality beginning in the 1980s. This is likely due to the evolving HIV/AIDS crisis in this community. Appendix Section 5.1 contains more detail.

cian involvement, including timely diagnosis and management of illness. To facilitate comparisons across age groups, the mortality rates represented by Figure 1 are those from all causes of death; specific cause-of-death is available in the underlying data and utilized later in the paper. These stark mortality patterns for black men relative to both black women and white men motivate the paper’s focus on health behaviors and outcomes of black men in particular.

### 3 Data

The paper’s empirical approach focuses on changes in health-seeking behavior and health outcomes as a result of the Tuskegee disclosure. We measure health-seeking behavior using data on healthcare utilization from the NHIS. The survey is a repeated cross-sectional sample of Americans which began in 1963. The survey is taken by household visit, and we use the individual-level respondent data in our analysis. We rely on the harmonization provided by the Integrated Health Interview Series (IHIS), which is based on the NHIS public-use data by the University of Minnesota. Consistent, harmonized responses regarding the utilization of medical services are available from 1969.<sup>20</sup> The public-use samples are stripped of geographic identifiers necessitating the use of restricted access for these data from the National Center for Health Statistics (NCHS) (Minnesota Population Center, 2015).<sup>21</sup> One important caveat with using these data is that PHS, the same entity that carried out the Tuskegee Study, sponsored the survey, although the interviews were conducted by the U.S. Census Bureau. It is possible our estimates represent attenuated behavioral responses since mistrustful individuals might have refused to answer the survey. In a simple difference-in-difference-differences (DDD) specification where we regress the NHIS sample weight for each individual on year fixed effects, an indicator for black, an indicator for male, an indicator for black-male, and an indicator for post-1972 interacted with each of the demographic indicators, we find that the survey weights for black men in the sample after 1972 rose by a statistically insignificant 0.3%.

Each individual in the survey self-reported the interval since their last doctor’s visit or physical, the number of physician visits and other physician interactions (including phone calls) in the last 12 months,

---

<sup>20</sup>The question we use regarding outpatient interactions is unchanged between 1969 to 1981. In 1978 the race categorization changed, with multiple categories included, making 1977 a natural stopping point. But we have also extended our analysis to 1981 (the year the question on doctor visits changes and harmonization is no longer possible) and obtain similar (though not disclosed) results. Inpatient (hospital) utilization data is available prior to 1969 and the broad patterns are discussed in Section 2.2. IHIS is now known as IPUMS Health Surveys: NHIS.

<sup>21</sup>We accessed the IHIS harmonized data, with location-based treatment variables (geographic proximity and migration shares) attached, inside Census Research Data Centers (RDCs) at Atlanta and Stanford. In later years, the NHIS data have been linked to mortality files, but these linked data are not available for our study period.

as well as the frequency and duration of hospital admissions.<sup>22</sup> The data also contain detailed demographic information, including age, family structure, income, education, and veteran status.<sup>23</sup> As discussed previously, we focus on men aged 45 to 74 in order to capture the effects on men (and women) in the age range most likely to benefit from preventive and early-stage disease care. Our baseline results are for non-veteran males, although we incorporate veterans status later in the paper.

Because morbidity data is difficult to interpret in this context (disease diagnosis would generally require a physician's visit), we rely on separate mortality data to assess whether the changes in beliefs and behaviors which we document below translate into an effect on longevity. In doing so, we follow a sizable literature that uses mortality to assess the efficacy of health interventions.<sup>24</sup> County-level mortality statistics by age, race, and gender are available from the CDC for each year between 1968 and 1988. We merge population data for the same period from the CDC to calculate mortality rates by age group, race, and gender (CDC, 2014). Because some U.S. counties have small black populations, the per-year mortality counts in some places are quite low, and sometimes zero. Because mortality rates based on a sparse number of events exhibit a large amount of random variation (Curtin and Klein, 1995, p.3), we follow advice from the NCHS and aggregate over space and time, combining annual county-level mortality counts to the state economic area (SEA) level and measuring biennial mortality rates.<sup>25</sup>

Our baseline results are for both age-adjusted all-cause and age-adjusted chronic-cause mortality. Chronic causes include cardiovascular disease (including hypertension and stroke), cancer, smoking-related respiratory disease, ill-defined conditions and ongoing symptoms, gastrointestinal disorders, and diabetes. Chronic mortality therefore includes the leading causes of death for older Americans during the time period and represents diagnoses for which therapies and interventions by health professionals could plausibly prevent or delay mortality.<sup>26</sup> We use age-adjusted mortality rates to account for differences in age structures across

---

<sup>22</sup>Proxy respondents were only used for children and adults who were not at home at the time of the interview. Because phone calls to medical providers were counted as physician interactions, all NHIS regressions control for whether the household has a telephone.

<sup>23</sup>The NHIS data do not contain consistent measures of individual health insurance coverage over our time period; however, in all our mortality regressions we control for local, time-varying Medicare and Medicaid expenditures, interacted with race and gender.

<sup>24</sup>Recent examples include Almond et al. (2006); Alsan and Goldin (2015); Bhalotra and Venkataramani (2012); Bailey and Goodman-Bacon (2015) and Goodman-Bacon (2015).

<sup>25</sup>State economic areas are groups of counties reflecting relatively homogenous areas within states. Results using county-level and annual mortality rates are in Appendix Table 5.

<sup>26</sup>Some examples include blood pressure and glucose control for the management and prevention of cardiovascular and diabetic complications such as heart attack, stroke, and kidney failure as well as counseling on prevention, early detection, and treatment of cancers. See Appendix Section 4 for a discussion of medical and public health innovations over this time period.

groups.<sup>27</sup> Since the impact of the Tuskegee revelation might affect mortality with a lag and last longer than the impact of utilization, we include mortality rates from 1968 to 1987 in our main analysis.<sup>28</sup> Note that we do not have place of birth in the publicly available compressed files. But because we are interested in exposure as a function of 1972 residence for a group of older men who were far more likely to be geographically mobile earlier in their lives, we propose that place of death is a better proxy for where they lived at the time of the disclosure than their place of birth. To the extent our current proximity measures capture connectedness or social networks, having data on *individual* migration histories, including time spent in an area before moving, or detailed network data would be useful. Unfortunately, these data are not available for our time period of interest. We do, however, make use of group-level migration patterns, as discussed in the next section.

## 4 Estimating Equation and Identification

Our main specification is an interacted DDD comparing differences across race (first difference) and gender (second difference) before versus after the study disclosure (third difference) interacted with a continuous, location-based measure of salience, either geographic proximity to Macon County, Alabama, or the share of black migrants originating from Alabama.

Why might the disclosure of the Tuskegee Study fuel mistrust in medicine particularly among black men? First, as discussed in the introduction, models of social identification and studies of empathy demonstrate that individuals are more responsive to injustices perpetrated against their own group and more empathetic to individuals in closer "proximity" to themselves (Dixit, 2003; Shayo and Zussman, 2011; Tabellini, 2008; Gutsell and Inzlicht, 2010; Singer et al., 2006). Distance between agents, as described by Tabellini, "could refer to geography, but also to social or economic dimensions such as religion, ethnicity and class." Second, in recent work on the formation of trust, psychologists have noted that men tend to form collective trust (with "categories" of people rather than individuals), while women form individual-specific relational trust (Maddux and Brewer, 2005). Third, even in the absence of differences in trust formation, *ceteris*

---

<sup>27</sup>Briefly, to construct age-adjusted rates, age specific mortality rates, calculated as deaths per 1000 relevant at risk population, are weighted by a reference population. We follow the demographic literature and use the standard 1940 population for weighting. See the Data Appendix for further details.

<sup>28</sup>After 1987, the paper's conclusions are likely to be compromised by both selective migration and by the evolving HIV/AIDS epidemic. But in the 1981-1987 period, HIV/AIDS was a nascent health threat, particularly among older black men. In this period, there were roughly 9,000 AIDS-infected men older than 45, of which perhaps 25% were black. See CDC (2001). Young people were at higher risk of acquiring HIV, and by 1994 AIDS had become the leading cause of death among black males aged 25-44. This increased mortality among younger black males in the late 1980s is apparent in Appendix Figure 2.

*paribus* black women would have had more experience with the healthcare system through previous childbirth experiences, and this experience may have inoculated them against the Tuskegee Study revelation. Fourth, men have a more elastic demand for health services (Vaidya et al., 2012; Thanakijborisut, 2015) and thus more easily dissuaded from visiting a physician. Finally, and perhaps obviously, the victims of the Tuskegee Study *were* black men. The disclosure detailed how the medical establishment purposefully selected and abused black men, and may have therefore revealed to black men information about how they might expect to be treated as well.

Empirically, we build on Tabellini's description of "distance" by employing both race and gender as treatment indicators, as well as two location-based treatment measures.<sup>29</sup> Our primary measure is linear geographic proximity to Macon County, Alabama (Figure 2 Panel (A)), supported by the linear relationship between post-1972 mortality changes and distance, as discussed below.<sup>30</sup> This continuous proximity metric creates concentric circles of equal proximity around the impact point of Tuskegee, Alabama. We note that geography may capture an identification or empathy response as discussed above, although we remain agnostic regarding the precise mechanism through which geographic proximity affects behavior. Alternatively, this proximity metric may also reflect information contained in the signal if, for example, individuals at greater geographic distances do not believe that the Tuskegee experiment disclosure provided relevant information regarding the trustworthiness of their local medical practitioners.<sup>31</sup>

As an alternative measure of salience, we use the fraction of black migrants to a particular state or SEA from the state of Alabama (Figure 2, Panel (B)). (We drop Alabama observations from the sample in this analysis.) The Tuskegee disclosure followed several decades of large-scale migration, particularly among African-American males, and we hypothesize that individuals in locations with larger numbers of incoming migrants from Alabama will also find the study's revelation more salient. We take advantage

---

<sup>29</sup>The appendix contains a fully-specified model of how prior beliefs, prior experience with the medical profession, shared characteristics with the Tuskegee study subjects, and proximity to the study interact to determine health-seeking behavior

<sup>30</sup>Data from the Survey of Black Americans support the notion that black men from the South identified more with the men from the study. When asked "how close does the respondent feel to black people who are poor", 78% of black men born in the South answered they felt "very close" compared to 65% of men born elsewhere (Jackson et al., 1979). We thank Trevon Logan for pointing out this source.

As another example, although the Rodney King beating, which took place in March 1991, was widely publicized in many media markets, opinions on the police force shifted most markedly for black men. Though we lack geographic identifiers in the survey data, comparing 1989 and 1992 polling data, the percentage of people who disagree with the statement: "These days police in most cities treat Blacks as fairly as they treat Whites" jumped 18% among black men, 7% among black women, and declined among whites (ABC News/The Washington Post, 1992; NBC, 1989).

<sup>31</sup>We exclude the SEAs containing Los Angeles and San Francisco from the analytic sample. These two cities hold most of the black population in the West region, and they are more connected to Alabama than our distance-based proxy for study salience would suggest (see Appendix Figure 7). Our migration-based results are robust to the inclusion of these two cities. (See Appendix Table 5, column (1).)



of the complete count version of the 1940 U.S. Census, which contains a question about 5-year migration patterns with detailed geography measures, to calculate this statistic.<sup>32</sup> Migration rates are highest in young adulthood; thus, the migration patterns from 1935-1940 will be reflective of the origins of individuals aged 45-74 in 1972. The 1940 Alabama migration rates are additionally relevant as migration patterns are roughly stable over time, making the 1940 patterns a good proxy for patterns in the years subsequent.<sup>33</sup>

#### 4.1 Motivating Difference-in-Differences Estimates

Recall from Figure 1 that black male mortality was converging relative to white men from 1968 through the early 1970s before diverging thereafter. We use a simple difference-in-differences (DD) framework to explore these changes. Specifically, we compare the post-1972 age-adjusted mortality rates from chronic disease of older black men relative to their white male or black female peers across SEAs grouped into  $K$  bins of 150 kilometers of distance from Macon County, Alabama.<sup>34</sup>

To estimate the post-1972 mortality penalty for older black men compared to white men in each bin, we estimate a set of  $\beta^k$  coefficients from the equation below. Group-specific, chronic cause mortality is reflected by  $Y_{rat}^k$  where  $a$  reflects the SEA of residence at time of death,  $t$  is year of observation, and  $r$  denotes the race of the group.

$$Y_{rat}^k = \alpha + \beta^k \left( \mathbf{I}_r^{black} \cdot \mathbf{I}_t^{post} \right) + \gamma^k (\mathbf{I}_t^{post}) + \phi_{a,black} + \varepsilon_{rat} \quad \text{for } k \in [1, K]. \quad (1)$$

$\mathbf{I}_r^{black}$  and  $\mathbf{I}_t^{post}$  are binary indicators for black and post-1972 observations, respectively, while  $\phi_{a,black}$  is

<sup>32</sup>Using later census years would preclude us from using the detailed geographic information publicly available for 1940. We normalize by black migrants for two reasons. First, doing so gives a measure of what percentage of new information is coming from Alabama. (If the denominator was the black population, for example, the new information measure would be diluted.) Second, and more importantly, we only observe the migration variables in the five year period of 1935 to 1940. But the migration of this generation of men extended from 1918 up through 1960. The patterns of migration were persistent over time, so even though the 1935-1940 measure is not an accurate measure of the absolute number of migrants, the relative measure (those from Alabama divided by all migrants) is a good proxy for how connected the stock of black residents in 1972 would have been to Alabama, given several decades of migration preceding 1972.

<sup>33</sup>We also considered whether formal information networks, such as media exposure, could serve as an alternative treatment, but prefer geographic proximity and migrant measures for two main reasons. First, defining media exposure is complicated by a dearth of circulation statistics for local black newspapers and the absence of local television and radio archives suitable for content analysis. (Black newspaper circulation figures that are available (e.g., Ayer (1971)) are rarely audited, in contrast to the more mainstream local daily newspapers from Gentzkow et al. (2014).) Second, in our results (discussed below) we find that less educated black men appear to be those most affected by the disclosure and are driving our results. This finding, coupled with the wide dissemination of the Tuskegee study by the Associated Press, suggests to us that information about the study was necessary but not sufficient to modify health-seeking behavior; individuals also had to identify or empathize enough with the study subjects to believe that doctors could treat them in a similar fashion. Appendix Section 3 contains more discussion on media coverage of the Tuskegee study.

<sup>34</sup>Age-adjusted mortality rates for older adults (ages 45-74) are measured at the level of each SEA (denoted  $a$ ) for each race ( $r$ ) and gender ( $g$ ) combination: black males, black females, white males, white females. Bins in the middle of the country with less than 100,000 older black men were paired into superbins.

an SEA-by-race fixed effect common across all years. Regressions are weighted by the relevant population in each SEA (e.g. 45-74 year old men for the all-male sample).

In this equation,  $\beta^k$  captures the post-1972 effect of being a black male relative to white men, controlling for time-invariant differences in black and white male mortality in each SEA and for a general post-1972 mortality effect ( $\gamma^k$ ). If mortality rates for black men had continued to converge in the post-1972 period, we would measure a value of  $\beta$  less than zero in each bin. Alternatively, stalled convergence would generate a value of  $\beta$  greater than or equal to zero. As anticipated, given the results in Figure 1, the full-sample  $\beta$  (across all values of  $k$ ) is positive and significant, indicating post-1972 divergence in mortality for older black men relative to their white peers of approximately 5.2 log points. This estimate is plotted as a thick (blue) line, and both the estimate and 95% confidence interval are reported in the heading for Figure 3, Panel (A).

Yet this average treatment effect of being a black male after 1972 masks significant heterogeneity. We find a strong geographic gradient in the value of  $\beta$  along a measure of distance from Macon County, Alabama, with locations closer to Macon County showing stronger evidence of divergence. In Figure 3, Panel (A), we plot the value of these coefficients by bin, as well as a (thin, dashed) line of best fit. Black men in close proximity to Tuskegee saw an increase in relative chronic mortality of about 9 log points, and the effect declines with distance.

To compare the post-1972 experience of black men to that of black women, we estimate a separate set of  $\beta^k$  coefficients on a sample of black mortality rates, male and female, replacing indicators for black with indicators for male in equation 1.<sup>35</sup> As indicated in the header for Panel (B) of Figure 3, black male age-adjusted chronic mortality increased relative to black female mortality by a statistically significant 9.1 log points after 1972. Here, the geographic gradient is even more apparent. The value is 17 log points in locations closest to Tuskegee and again declines with distance.<sup>36</sup>

These temporal and geographic mortality patterns for black men are not mirrored in other sub-groups. In Panel (C) of Figure 3, we estimate equation 1 on an all-female sample. In this case,  $\beta^k$  coefficients reflect the post-1972 convergence or divergence experiences of black women in each geographic bin. Consistent with Figure 1, we find that black women continue to converge on their white peers after 1972, and the average

<sup>35</sup>The estimating equation is  $Y_{gat}^k = \alpha + \beta^k (\mathbf{I}_g^{male} \cdot \mathbf{I}_t^{post}) + \gamma^k (\mathbf{I}_t^{post}) + \phi_{a,male} + \varepsilon_{rat}$  for  $k \in [1, K]$ , where  $g$  reflects gender.

<sup>36</sup>A geographic gradient figure (relying on state-level data) similar to Figure 3 cannot be produced for utilization outcomes given disclosure concerns. But the interacted DDD estimates presented later in the paper capture the geographic gradient described here.

estimated value of  $\beta$  is  $-9.5$  log points. Moreover, the geographic gradient in these results is upward-sloping, indicating that black women in closer proximity to Macon County were converging more quickly than their peers further afield. A similar exercise in Panel (D) examines the experience of white men relative to white women. Overall, the gap in age-adjusted chronic mortality for white men relative to white women fell by 5.6 log points, perhaps as white men became beneficiaries of medical technologies and advice that spread over this time period. (See Appendix Section 4.) We see little evidence that proximity to Macon County was detrimental for the health of white men in the post period. Although the dotted line of best fit is downward sloping, this result is driven by convergence occurring at distances beyond 2000 kilometers from Alabama; estimated values of  $\beta^k$  within the South show no geographic gradient.

To assess whether the observed geographic patterns in health outcomes for black men compared to black women and white men emerged in the post-1972 period, we look for the same patterns in the years prior to the Tuskegee disclosure, instituting a false definition of  $\mathbf{I}^{post}$  in the set of pre-1973 observations. We plot estimates of  $\beta$  for the same set of distance buckets in Panels (E) and (F) of Figure 3, defining  $\mathbf{I}^{post}$  to be one for all observations after the mid-point of the pre period (from 1970/1971 on) and dropping observations after 1973. These falsification tests indicate no geographic gradient in the estimates of  $\beta$ , and the slope of the line of best fit is flat for both the all-male and all-black specifications. This is in contrast to the highly statistically significant slope coefficient in Panels (A) and (B). The geographic gradients documented in Figure 3, both across all regions and within the South, inform the empirical specifications to follow.

## 4.2 Baseline Estimating Equations

The DDD estimator below interacts differences over time, race, and gender with a continuous measure of proximity to Macon County, Alabama. We denote this proximity measure  $P_j$  where  $j \in s, a$  represents measurement at the state or SEA level, respectively. To facilitate interpretation of regression coefficients, geographic distance is transformed to proximity to Macon County, Alabama, in thousands of kilometers.<sup>37</sup>

The relevant estimating equation for healthcare utilization for individual  $i$  of race  $r$  and gender  $g$  measured

---

<sup>37</sup>Specifically, we use  $\max(\text{distance}) - (\text{distance}_s)$  so that locations farthest from Tuskegee receive a proximity value of 0. Distance is measured at the state level in the utilization data and at the SEA or county level for the mortality data. In the mortality data, distances are measured from the geographic centroid of each SEA to the centroid of Macon County, Alabama. For the NHIS outcomes, which are available at the state level, we use county-level black adult population statistics and geographic county centroids to create black population-weighted state centroids which are used to construct proximity as above. These centroids represent the average latitude and longitude of black individuals in each state based on the black population of counties (Haines, 2010).

in state  $s$  at time  $t$  ( $Y_{igrst}$ ) is:

$$Y_{igrst} = \alpha + \beta_1(P_s \cdot \mathbf{I}_t^{post} \cdot \mathbf{I}_r^{black} \cdot \mathbf{I}_g^{male}) + \beta_2(P_s \cdot \mathbf{I}_t^{post} \cdot \mathbf{I}_g^{male}) + \beta_3(P_s \cdot \mathbf{I}_t^{post} \cdot \mathbf{I}_r^{black}) + \mathbf{X}'_{it} \Phi + \theta_{rgt} + \phi_{rgs} + \tau_{st} + \varepsilon_{igrst}, \quad (2)$$

while the estimating equation for the mortality rate of groups characterized by race  $r$  and gender  $g$  in SEA  $a$  at time  $t$  is:

$$Y_{grat} = \alpha + \beta_1(P_a \cdot \mathbf{I}_t^{post} \cdot \mathbf{I}_r^{black} \cdot \mathbf{I}_g^{male}) + \beta_2(P_a \cdot \mathbf{I}_t^{post} \cdot \mathbf{I}_g^{male}) + \beta_3(P_a \cdot \mathbf{I}_t^{post} \cdot \mathbf{I}_r^{black}) + (\mathbf{X}'_{at} \cdot \mathbf{I}_r^{black} \cdot \mathbf{I}_g^{male}) \Phi + \theta_{rgt} + \phi_{rga} + \tau_{at} + \varepsilon_{grat}. \quad (3)$$

In both equations, a full set of race-gender-time ( $\theta$ ), race-gender-geography ( $\phi$ ) and geography-time ( $\tau$ ) fixed effects are included. Race-gender-time fixed effects control flexibly for secular changes that could have differentially affected the health care utilization and mortality of each of the four groups. Race-gender-geography fixed effects absorb time-invariant location-specific factors that could differentially influence the health outcomes of each of the four groups. Local, time-varying shocks to health outcomes that affect all groups are absorbed by geography-time fixed effects.

In utilization regressions at the individual level, the vector  $\mathbf{X}$  includes income, education, age, whether or not the individual owns a telephone, marital status, as well as an indicator for rural-urban status. For mortality rates, measured at the SEA level, the model includes SEA-year fixed effects that control for the changing supply of healthcare across locations over time, provided those changes affected all demographic groups equally. We add supply measures (the prevalence of doctors, hospitals, hospital beds, and physicians, the presence of community health centers, the log of total government healthcare expenditures—Medicare, Medicaid, and veterans healthcare—and the log of Social Security expenditures), each interacted with black and male indicators, to allow for differences in the effects of these supply measures on each group over time. Practically, they matter little for the estimates. (See Appendix Table 3 for results without  $\mathbf{X}$  variables.)

We limit our analysis to a window around the disclosure of 1969-1977 for utilization measures and 1968-1987 for mortality. We do not attempt to model the carry-on effects of TSUS to future cohorts of black men given that the identifying assumption behind the DDD approach becomes more tenuous as one moves out in time.

### 4.3 Identification

The estimates of  $\beta_1$  coming from equations 2 and 3 reflect the effect of the Tuskegee Study disclosure provided there are no other systematic shocks to black men that affected healthcare utilization and mortality correlated with proximity to Macon County, but not due to the timing of the study’s disclosure. By conditioning on the fixed effects and covariates described above, these estimates flexibly control for the health penalty associated with being a black male in all years and for time-varying threats to identification such as national trends in incarceration and unemployment that affected all black men. Similarly, although access to care and insurance coverage for black men differed from other groups in this period, any time-invariant geographic differences in these factors are absorbed by the race-gender-location fixed effects. Location-year effects net out any time-varying health advantages or disadvantages associated with geography that affected all Americans, such as the rollout of Medicare and Medicaid and their various expansions, although we note that there is no major expansion or contraction of public insurance in or around 1972 that would serve to confound interpretation of our results. Because we also condition on supply-side healthcare measures in the mortality regressions, interacted with group indicators, our specification accommodates changes in healthcare supply that affected black men in particular. If our attempts to control for these changes are inadequate, most policy changes coinciding with the timing of the disclosure served to increase access for disadvantaged populations, particularly in the South, and would therefore bias our estimates towards zero.<sup>38</sup>

Together, these controls limit the scope for unobserved factors to those affecting only black men, but not black women or white men, in closer proximity to Macon County, Alabama, and only after 1972.

## 5 Results

### 5.1 Event Study Estimates

We first present the results of event study specifications for equations 2 and 3 in which we generate a coefficient for the interaction of proximity with black and male indicators for every year, each relative to

---

<sup>38</sup>We find no evidence that expenditure levels for these social programs exhibited a temporal or geographic pattern mirroring our main empirical results. In Appendix Table 7, both hospital beds per capita and Medicare expenditures show a continuous increase over this time period, and more so in locations closer to Tuskegee. But there is no trend break in 1972 that would have induced utilization and mortality changes in that year. (See Appendix Figure 8.) Goodman-Bacon (2015) estimates minority adult eligibility for Medicaid at 4.5%, a fraction unlikely to drive the results below. In the Appendix, we also report a more parametric version of our specifications that allow us to include trends in the location-specific share of democratic voters, incarceration rates and unemployment rates (Appendix Tables 3 and 5). Our results are not materially affected by the addition of these controls.

1972, as well as a coefficient for proximity interacted with a black indicator in each year and a coefficient for proximity interacted with a male indicator in each year, again relative to 1972. Specifically, we estimate:

$$Y_{irgst} = \alpha + \sum_{n \neq 1972} \beta_1^n (P_s \cdot \mathbf{I}_{t=n} \cdot \mathbf{I}_r^{black} \cdot \mathbf{I}_g^{male}) + \sum_{n \neq 1972} \beta_2^n (P_s \cdot \mathbf{I}_{t=n} \cdot \mathbf{I}_g^{male}) + \sum_{n \neq 1972} \beta_3^n (P_s \cdot \mathbf{I}_{t=n} \cdot \mathbf{I}_r^{black}) + \mathbf{X}_i' \Phi + \theta_{rgt} + \phi_{srg} + \tau_{st} + \varepsilon_{igrst}, \quad (4)$$

and a similar equation for mortality.  $\mathbf{I}_{t=n}$  is an indicator for each year (other than 1972), such that each  $\beta$  coefficient represents the interaction of proximity and group indicators in year  $n$ .

Figure 4, Panel (A) plots estimates of  $\beta_1$ , the difference in the racial gap in healthcare utilization by gender as a function of distance from Macon County, Alabama, relative to the difference in 1972, along with 95% confidence intervals. Panel (B) plots estimates of  $\beta_2$ , the gender gap in health care utilization for white men versus white women as a function of distance from Macon County, Alabama, relative to 1972. Panel (C) plots estimates of  $\beta_3$ , the difference in health care utilization for black women versus white women as a function of distance from Macon County, Alabama, relative to 1972. The set of pre-1972  $\beta_1$  coefficients are statistically indistinguishable from zero, with the exception for the first year (1969), but there is a sharp, statistically significant and sustained change beginning in 1972. Such an abrupt discontinuity after 1972 is not seen in the dynamic plot of  $\beta_2$  or  $\beta_3$  coefficients, providing evidence that we are not capturing a generic, location-based shock that affected other groups.

Panels (D) through (F) of Figure 4 contain the event studies for mortality. (Recall that the mortality data have been grouped to measure biennial averages and thus results are relative to 1972/1973.) Just as in Panel (A), the plotted  $\beta_1$  coefficients in Panel (D) are not statistically significant in the pre-disclosure years. After the disclosure of the Tuskegee Study, however, the differences in age-adjusted chronic mortality rates for black men relative to white men compared to black women relative to white women (or black men relative to black women, compared to white men relative to white women) increase with proximity to Macon County, Alabama, as indicated by the positive and statistically significant  $\beta_1$  coefficients for years after 1973. Panels (E) and (F), which plot the  $\beta_2$  and  $\beta_3$  coefficients, do not demonstrate an abrupt change in 1972.<sup>39</sup>

<sup>39</sup>Due to data limitations, we cannot accurately generate a longer pre-period for the mortality or utilization results. NCHS mortality data are available for earlier years, but the 1960 U.S. Census of Population, from which population counts would need to be derived for such an exercise, only reports local population counts by age and gender for the *nonwhite* population. In an attempt to construct a denominator for black mortality rates for years prior to 1968, we limit the sample to locations where at least 60% of the 1960 non-white population was black. (Our results are robust to other choices of this cutoff.) Extended event study results (in Appendix Figure 3) generated under these limitations also demonstrate insignificant and relatively flat pre-period estimates of the black male mortality penalty in varying proximity to Macon County, Alabama.

## 5.2 Main Estimates

The event studies contained in Figure 4 are consistent with the notion that the Tuskegee disclosure had an impact on both health-seeking behaviors and mortality. To provide a summary measure of the impact of the Tuskegee Study revelation, and to subject our results to a battery of placebo and other robustness checks, we move to reporting the results of equations 2 and 3.

Table 1 reports the  $\beta_1$ ,  $\beta_2$  and  $\beta_3$  coefficients in equation 2 for outcomes related to both health seeking behavior and mortality. We report four utilization outcomes of interest: how many outpatient physician interactions an NHIS respondent reported in the last 12 months ("Number Outpatient Visits"), whether an individual reported any outpatient visit with a physician in the last 12 months ("Any Outpatient Visit"), whether an individual reported having been admitted to a hospital in the past 12 months ("Any Hospital Admission") and the number of nights spent in the hospital in the past 12 months ("Number Nights in Hospital"). We report four mortality outcomes of interest in Table 1 columns (5) to (8): the log and level of age-adjusted all-cause mortality and the log and level of age-adjusted chronic mortality for adults 45-74 years of age.

Estimated coefficients in column (1) of Table 1 indicate that black men experienced sharp declines in the probability of visiting a doctor in the years following 1972 as a function of their proximity to the Tuskegee Study's location. These estimates indicate that a standard deviation increase in proximity to the study's home county was associated with reduced outpatient interactions of 0.9 visits per year — approximately 22% of the pre-disclosure black male sample mean. From column (2), a one standard deviation increase in proximity to Macon County, Alabama, was associated with a 2.5 percentage point decline in the probability of having an outpatient doctor's visit, approximately 4% of the sample mean.

For hospitalization outcomes, estimates for  $\beta_1$  in column (3) of Table 1 indicate a reduction in the probability of hospital admission for black men after 1972 of 1 percentage point per standard deviation of geographic distance. These results, although not statistically significant, indicate a post-Tuskegee Study disclosure reduction in acute medical care of 7% of the pre-disclosure mean. Although hospital admission rates went down, column (4) of Table 1 indicates black men appear to have had more advanced illness on presentation as reflected in longer hospital stays: black men experienced an increase in duration of stay of 0.5 nights per standard deviation. These estimates are large, representing 22% of the pre-1972 sample mean.

In Appendix Table 2, we estimate this baseline equation on another healthcare utilization outcome less

likely to have been affected by the Tuskegee disclosure: dental visits over the last 12 months. This outcome is available for a slightly truncated period of time (1969-1975), and shows black men in closer proximity to Macon County, Alabama, are slightly *more* likely to visit the dentist after 1972. This result provides suggestive evidence that racial gaps in other forms of care stabilized or even converged after 1972 and that relative avoidance was specific to institutions most reminiscent of the Tuskegee Study.

In columns (5) and (7) of Table 1, we estimate that a one-standard deviation increase in proximity to Tuskegee was associated with a post-1972 increase in both all-cause and chronic-cause age-adjusted mortality for black men of 3.7 and 4.5 log points, respectively. When we estimate the model in levels, we find a one standard deviation increase is associated with 1.1 more deaths from any cause per 1000 population (column (6)) and 0.8 more deaths from chronic causes per 1000 population (column (8)). Based on our estimates, the elasticity of all-cause age-adjusted mortality with respect to physician visits ranges from 0.14 to 0.18; in other words, a 1% decrease in physician visits would increase mortality by approximately 0.14–0.18%.<sup>40</sup> We view these estimates as an upper bound since men might have not only stopped interacting with physicians, they might have also delayed going to the hospital or heeding public health messaging around smoking for instance (see Appendix Table 2 column (2)). However, this value is consistent with similar estimates from Medicare and community health center expansion (see Lichtenberg (2002); Bailey and Goodman-Bacon (2015)).<sup>41</sup> Notably, we do not observe an effect of the Tuskegee disclosure on mortality rates from acute causes of death associated with violence, accidents or other external causes (see Appendix Table 6). In unreported results the largest impacts appear to come from deaths due to cardiac conditions, diabetes, and respiratory diseases.<sup>42</sup>

In almost all cases, estimates of  $\beta_2$  and  $\beta_3$  are insignificantly different from zero, implying no systematic post-1972 change in the gender gap in mortality for whites or the racial gap in mortality for women as a function of proximity to Macon County, Alabama. The estimated value of  $\beta_2$  is positive and significant for the log mortality outcomes, but the significance of the coefficient belies two important observations. First, there is no change in the trajectory of the  $\beta_2$  coefficient in 1972 (see Figure 4, Panel (E)). Rather, there is

---

<sup>40</sup>The elasticity was obtained by dividing a one standard deviation percent change in all-cause mortality with a one-standard deviation change percent change in outpatient physician interactions. The range is due to the inclusion or exclusion of veteran males from the utilization estimates; the higher elasticity is from a sample including veterans (whose utilization response was more muted).

<sup>41</sup>Bailey and Goodman-Bacon (2015) show that exposure to a community health center in one's county of residence between 1965 and 1974 reduced adult all-cause mortality by as much as 2%, implying an elasticity of approximately -0.18. Lichtenberg (2002) provides a benchmark rate of -0.095.

<sup>42</sup>We hesitate to place too much emphasis here because regressions by cause-of-death are subject to a large number of missing values.



a low, positive gradient in the mortality of white men compared to white women with a slope an order of magnitude smaller than  $\beta_1$ . Second, unlike the  $\beta_1$  effect, the  $\beta_2$  effect is not centered on Macon County, Alabama, as demonstrated in Appendix Figure 5.

### 5.3 Heterogeneous Effects

In Table 2, we explore heterogeneous effects by splitting the sample in various ways and reporting estimates of  $\beta_1, \beta_2$  and  $\beta_3$  for these subsamples. First, we explore the roles of income and education by dividing the sample at the median of black male household income (columns (1) and (2)) and at the median of black male education (columns (3) and (4)). Because the entire sample is divided at the black male median, above- and below-median samples are not equally sized. In both cases, we conjecture that black men lower on the socioeconomic ladder would respond more strongly to the Tuskegee Study disclosure if the channel for utilization effects is empathy or salience. Indeed, although the estimates of  $\beta_1$  are negative and significant for both income groups, the point estimates for the effect of the Tuskegee disclosure on the health seeking behavior of poorer, less educated black men are significantly distinguishable from higher income, better educated black men at the 1% level. Black men in the lowest 50<sup>th</sup> percentile of the income distribution reduce their utilization by approximately 3 times more than black men in the top half of the income distribution. At the same time, black men with below-median education reduced their utilization by 1.9 visits per standard deviation of proximity to Macon County, Alabama, while the upper 50<sup>th</sup> percentile of the education distribution exhibits a point estimate of approximately zero.

Next, we examine the moderating effect of black physicians on our baseline results in columns (5) and (6) of Table 3. We hypothesize that the availability of a black physician would have reduced the rate at which black men downgraded their expectation of encountering a "good" doctor. For these results, we collected data on the number of black and white physicians in each U.S. state from the 1970 U.S. Census reports (US Census Bureau, 1970). Importantly, these counts are measured before, and are therefore not endogenous to, the 1972 disclosure. These numbers are not available at the SEA level, and so we do not perform a similar analysis for mortality results. But for the measures of primary care utilization, when we split the samples by places above and below the median number of black doctors (as a percentage of all doctors), we find suggestive evidence for a moderating effect of black doctors, although the differences are not statistically significant.<sup>43</sup>

---

<sup>43</sup>We do not find the same pattern if we use black physicians per black capita, suggesting that black men responded to the

Last, we divide the sample by marital status. In the absence of individual birth histories in the NHIS, we use marital status as a proxy for whether or not a woman had given birth. By 1960, 97% of all births were in hospitals (Feldhusen, 2000), and unmarried women had fewer children compared to married women.<sup>44</sup> Thus, if marriage is a proxy for more childbirth-related experience with the healthcare sector,  $\beta_2$  for unmarried black women should be more similar to black men. These results are tested in columns (7) and (8) of Table 2. In estimates for  $\beta_1$ , we find that unmarried men have a more negative response to the news of the Tuskegee Study than their married counterparts, though the difference is relatively small and not statistically significant. But unmarried black women, represented by estimated coefficients on  $P_s \cdot \mathbf{I}_t^{post} \cdot \mathbf{I}_r^{black}$  in column (8) of Table 2, respond very differently compared to married black women (column (7)), both in sign and magnitude. Mirroring the behavior of black men, unmarried black women *reduce* health provider interactions in proportion to their proximity to Macon County, Alabama, whereas married black women continue to exhibit convergence in the South. For both married and unmarried women, the size of the coefficient is about a third of that for black men, albeit with opposing signs for married women.

## 6 Threats to Identification and Robustness Checks

We perform several tests to bolster a causal interpretation for our results. First, we use placebo locations to show that the main results are specific to gradients of proximity to Macon County, Alabama. Second, we test the robustness of our estimates by incorporating migration networks as an alternative measure of proximity and demonstrating similarly signed and statistically significant estimates. Third, we use placebo populations to demonstrate that the main results for both utilization measures and mortality rates are not observed when we estimate the baseline equations on younger population samples. We also show that our results are robust to a South-only sample; to dropping all control variables; to limiting to non-South observations; and to parametric estimating equations that allow for trends in unemployment and incarceration in the mortality specifications. We discuss the findings of the main robustness checks below, and the remainder are described in the Appendix.

---

"whiteness" of the local medical profession, rather than to the availability of a black physician.

<sup>44</sup>In 1965, approximately 75% of black infants were born to married mothers (Akerlof and Yellen, 1996). In related work, Thomasson and Treber (2004) find that the hospitalization of childbirth in the 1930s and, in particular, the introduction of sulfa drugs may have disproportionately reduced maternal mortality among black women, despite the segregation of hospitals and otherwise racially inequitable access. Because older women in our sample would have given birth between 1925 and 1960 (roughly), a substantial share of them would have benefited from this "positive" healthcare experience.

## 6.1 Alternative Measures of Proximity

The reduction in healthcare utilization and uptick in mortality for black men as a function of geographic proximity to Macon County, Alabama, is also apparent using an alternative measure of proximity. Table 3, Panel (A) reports these checks for the utilization results regarding number of physician interactions and Panel (B) provides analogous results for log age-adjusted chronic mortality. In both cases, we replace the baseline proximity measure, geographic proximity to Macon County, Alabama, with the percentage of 1935-1940 black migrants to a particular state or SEA who originated in Alabama. (All Alabama SEAs and the state of Alabama are excluded from this analysis.) We observe statistically significant differences in the post-1972 utilization of primary healthcare and in the post-1972 mortality rates for black men as a function of this variable as well. Specifically, we estimate that a 10% increase in the share of black migrants from Alabama reduces utilization by 1 interaction per year and increases mortality by approximately 2%.

## 6.2 Permutation Tests

To test whether the geographic gradients documented in our baseline interacted DDD results are specific to distance from Macon County, Alabama, we run placebo regressions, replacing the baseline proximity measure (proximity to Macon County, Alabama) with proximity to the geographic centroid of every other state or SEA and re-estimating the model. These regressions serve as placebo tests, evaluating whether we find the same (or stronger) utilization effects as a function of the gradient to other locations in the U.S. Figure 5 presents the distribution, in histogram form, of the estimated values of  $\beta_1$  in each of these tests when the outcome is the intensive margin of primary care utilization (Panel (A)) and log age-adjusted chronic mortality (Panel (B)). The vertical line indicates the estimated coefficient from Table 1 when the proximity measure is the baseline proximity to Macon County, Alabama. In both cases, the value of the Macon County estimate is greater (in absolute value) than 96% of placebo estimates; other outcomes exhibit similar patterns.

For the mortality results, we can also display heat maps of the coefficient estimates of  $\beta_1$  as well as  $\beta_2$  and  $\beta_3$ . These results, contained in Appendix Figure 5, Panel (B), demonstrate that the handful of locations where the estimates for  $\beta_1$  are greater than those using proximity to Macon County, Alabama, are also close geographically and thus highly correlated with the treatment. The coefficients for  $\beta_2$  and  $\beta_3$ , using these alternative proximity measures exhibit a far smaller range of estimate values. For  $\beta_2$ , these values are

largest in the North Central states, while  $\beta_3$  values are actually *smallest* in the U.S. South, although, again, of much smaller magnitude than those estimated for  $\beta_1$ .<sup>45</sup>

### 6.3 Robustness Checks

To evaluate whether the paper's measured impacts simply reflect a general Southern effect, columns (2), (3), (6), and (7) of Table 3 restrict the analysis sample to southern residents only. This reduces the scope for identification threats to things correlated with geographic proximity to Macon County, Alabama, in particular, and not to the South in general. The estimated value of  $\beta_1$  is relatively unchanged in these specifications compared to our baseline estimates, particularly when using geographic proximity as the treatment variable. In Appendix Table 3, we include additional robustness checks for the utilization and mortality outcomes including dropping the South entirely and adding interactions between region fixed effects and post, black, and male indicators. We obtain similar results to those presented in Tables 1 and 3.

We next limit the sample to children under 14 years of age for both mortality and utilization results. The post-1972 difference in outpatient care for black and white male children exhibits no geographic gradient, nor does the difference in utilization for black male and black female children as evidenced by coefficients statistically indistinguishable from zero in column (4) of Table 3. For mortality outcomes, there is no differential change in the mortality rate of black male children after 1972 as a function of proximity to Macon County, Alabama, although male children and black children, in general, experienced lower death rates along this geographic gradient. This result is based on a mortality outcome in levels (instead of logs) due to the large number of zeroes, but caution should still be used in interpreting these results given the small numbers of death compared to older age groups. The non-result for black male children is consistent with both a lower salience of the study's abuses for younger children and with results showing that black married women were seemingly unaffected by the study's disclosure. Although the perceptions of their fathers could feasibly have affected the demand for children's healthcare utilization, the non-result here may indicate that decision-making for children at this time was mostly driven by maternal preferences. Given these results, the scope of identification threats is narrowed substantially to those factors correlated with the primary care utilization and mortality rates of older black men centered on Macon County, Alabama, after 1972 which did not affect child mortality or healthcare utilization.

---

<sup>45</sup>The same map cannot be disclosed for the utilization data.

## 7 Channels

Our measure of how much trust one has in their doctor comes from the General Social Survey (GSS). The GSS is a repeated cross section extending from 1972 to the present. The earliest year questions were asked about doctors was 1998, when several questions were included. In particular, participants were asked about whether "doctor's judgment trusted" and whether "doctors deny me the treatment needed". As a placebo outcome, we also examine respondents' views on whether people, in general, can be trusted.<sup>46</sup> Although we do not have data for both before and after the disclosure, we can test whether individuals living closer to Macon County, Alabama, exhibit greater post-disclosure mistrust. For this analysis, we ask whether there is a racial (gender) gap in medical trust that varies across genders (races) as a function of proximity to Macon County, Alabama. The estimating equation for survey responses for individual  $i$  residing in state  $s$  of race  $r$  and gender  $g$  is given by:

$$Mistrust_{irgs} = \alpha + \beta_1(P_s \cdot \mathbf{I}_r^{black} \cdot \mathbf{I}_g^{male}) + \beta_2(P_s \cdot \mathbf{I}_r^{black}) + \beta_3(P_s \cdot \mathbf{I}_g^{male}) + \tau_s + \theta_{rg} + \mathbf{X}_i' \Lambda + \epsilon_{irgs} \quad (5)$$

where  $P_s$  is proximity to Macon County,  $\tau$  represents a current state of residence fixed effect, and  $\theta$  denotes race-by-gender fixed effects. State fixed effects ensure that  $\beta$  coefficients capture the geographic gradient in mistrust for each demographic group net of state-specific attitudes common across all groups. The sample includes individuals at least 10 years of age at the time of the disclosure.<sup>47</sup>  $X$  contains age, marital status and education category fixed effects. Standard errors are clustered at the level of treatment (state of residence). The results, contained in Table 4, demonstrate that black men exhibit a strong, statistically significant geographic gradient in mistrust of doctors and similar (though not statistically significant) concern regarding treatment denial. A one standard deviation increase in proximity to Macon County, Alabama, is associated with a 13 percentage point increase in medical mistrust and treatment denial suspicion among black men as compared to white men, net of such racial gaps for women. Note that  $\beta_2$  (the geographic gradient in mistrust for white men as compared to white women) and  $\beta_3$  (the geographic gradient in black women compared to white women) are often oppositely signed and not significant. It is not the case

<sup>46</sup>Individuals who replied "no" or "don't know" to the question of whether people can be trusted were coded as 1 and those who replied "yes" were coded as 0. A similar coding strategy was applied to the outcome variables for medical mistrust (measured on a four point Likert scale) so that the coefficients can be easily interpreted as marginal effects.

<sup>47</sup>This implies that age in the sample ranges from 36 to 89 with an average in the mid-fifties. Note that if we restrict to age < 10 in 1972, those aged 18 to 35 in our sample, our coefficients on medical mistrust and deny treatment generally have the "wrong sign".

that black men closer to Tuskegee are simply less trusting;  $\beta_1$  in column (3) where the outcome is general mistrust is opposite signed and not statistically significant.

Finally, we have posited the impact of Tuskegee would be more poignant for individuals who had limited experience with the healthcare sector prior to the disclosure. To isolate the role of experience as a mitigating factor on belief formation, we examine the post-1972 differences in healthcare utilization between men who have served in the military versus those who have not, again as a function of proximity to Macon County, Alabama. To do so, we drop women from the utilization sample, add back veteran men, and replace  $\mathbf{I}_g^{male}$  in equation 2 with an indicator variable for whether an individual was a non-veteran, i.e., *never* drafted or entered into the military.

Estimated coefficients from this modified specification indicate a marked geographic gradient in the veteran/non-veteran gap in primary care utilization in the years following the Tuskegee disclosure, as contained in Table 5. This finding is restricted to black men (as evidenced by the null or oppositely signed  $\beta_2$  coefficient). Although black men's utilization declined overall, (see  $\beta_3$  in columns (1) and (2)), this effect was far more pronounced for non-veterans. For example, veteran black males reduced the number of outpatient visits per year by 0.59 per thousand kilometer proximity to Macon County, Alabama, while nonveteran black males reduced their utilization by an additional 1.16 visits per year.<sup>48</sup> There are several possible explanations for this observation, including that veteran black men may have expected doctors to treat them as "veteran patients" rather than as "black male patients" and were therefore less worried about facing discrimination. Nevertheless, the results for veterans are consistent with predictions from the multi-period model wherein past experience with the medical profession dampens the response to the news of Tuskegee.

## 8 Effect on Life Expectancy

The paper's baseline results for the mortality of older adults, aged 45-74, can be converted into predicted reductions in life expectancy. To do so, we use levels of all-cause mortality as the outcome in equation 3. Predictions based on the full complement of terms, including the interaction of  $P_a \cdot \mathbf{I}_t^{post} \cdot \mathbf{I}_r^{black} \cdot \mathbf{I}_g^{male}$  multiplied by  $\widehat{\beta}_1$ , reflect mortality with the Tuskegee Study revelation. Predictions based on equation 3, but *without* this product, reflect counterfactual mortality in the absence of the revelation. The average value of these predictions are weighted so that they reflect the mortality patterns of black men given their population

<sup>48</sup>Appendix Figure 9 contains event study coefficients for the within-male comparison.

distribution circa 1970. These predicted mortality rates allow us to construct abridged, current life tables, in the presence and absence of the Tuskegee revelation, as described in London Health Observatory (2010).

For black men in our sample, the observed life expectancy, conditional on reaching age 45 and based on mortality observed over the 1968-1987 window, is 23.7 years. Counterfactual life expectancy in the absence of the calculated treatment effect is 25.2, an increase of 1.5 years. This estimated decrease in the life expectancy of black men attributable to the Tuskegee revelation represents approximately 35% of the racial gap in male life expectancy in 1980 and 25% of the gender gap in black life expectancy at the same juncture (National Center for Health Statistics, 1985). As a benchmark for these results, Black et al. (2015) find that migration to the North in the first waves of the Great Migration (1916-1932) resulted in decreased life expectancy at age 65 of at least 1.5 years. Because their most robust analysis is based on Medicare data, these authors do not provide a similar estimate for life expectancy at age 45. Another useful benchmark is the hypothetical removal of smoking, which has been projected to increase life expectancy of an 18-year old by 1.7 years (Stewart et al., 2009).

## **9 Conclusion**

The Tuskegee Study was one of the most egregious examples of medical exploitation in U.S. history. Our estimates indicate that the years immediately following the study's disclosure brought significantly lower utilization of both outpatient and inpatient medical services by older black men in closer geographic proximity to the study's subjects. The effects are particularly heightened among less-educated and lower income men, a socioeconomic profile shared by the men targeted by PHS investigators. Moreover, the reductions in healthcare utilization we document paralleled a significant increase in the probability that older black men died before the age of 75. The data indicate no corresponding effects for younger black males or for white males or black women. Our results are robust to accounting for a wide range of policies, economic forces, and individual characteristics thought to shape health behaviors.

These findings underscore the importance of trust for economic relationships involving imperfect information. Typically the literature on trust has focused on trade settings (Greif, 1989); however, much of medical care depends on health providers and patients resolving information asymmetries. Trust, therefore, is a key component of this interaction. Our results suggest that positive interactions with medical providers can temper the formation of negative beliefs after the revelation of group-specific exploitation, a prediction

that is borne out in the paper's main results. Our findings also relate to the often observed low take-up for products with proven health benefits. Understanding the historical rationale for beliefs, even if seemingly maladaptive, may prove useful to formulating policy aimed at increasing such demand.

Marcella Alsan, *Stanford University and NBER*

Marianne Wanamaker, *University of Tennessee, IZA, and NBER*

## References

- ABC News/The Washington Post (1992). ABC News/The Washington Post: Los Angeles Race Riots.
- Adler, N., W. Boyce, M. Chesney, et al. (1993). Socioeconomic inequalities in health: no easy solution. *JAMA* 269(24), 124–163.
- Aizer, A. and L. Stroud (2010, March). Education, Knowledge and the Evolution of Disparities in Health. Working Paper 15840, National Bureau of Economic Research.
- Akerlof, G. and J. Yellen (1996). An Analysis of Out-of-Wedlock Births in the United States. Technical report, Brookings Policy Brief.
- Almond, D., K. Y. Chay, and M. Greenstone (2006, December). Civil Rights, the War on Poverty, and Black-White Convergence in Infant Mortality in the Rural South and Mississippi. Working Paper 07-04, MIT Department of Economics.
- Alsan, M. and C. Goldin (2015, June). Watersheds in Infant Mortality: The Role of Effective Water and Sewerage Infrastructure, 1880 to 1915. Working Paper 21263, National Bureau of Economic Research.
- Alsan, M. M. and D. M. Cutler (2013). Girls' education and HIV risk: Evidence from Uganda. *Journal of Health Economics* 32(5), 863 – 872.
- American Cancer Society (2008). Colorectal Cancer Facts and Figures. Technical report, American Cancer Society, Atlanta.
- American Cancer Society (2009). Cancer Facts and Figures 2009-2010. Technical report, American Cancer Society, Atlanta.
- Ayer (1971). *Ayer Directory of Newspapers, Magazines and Publications*. Ayer press.
- Bailey, M. J. and A. Goodman-Bacon (2015). The War on Poverty's Experiment in Public Medicine: Community Health Centers and the Mortality of Older Americans. *American Economic Review* 105(3), 1067–1104.
- Banerjee, A. and E. Duflo (2011, March). *Poor Economics: A Radical Rethinking of the Way to Fight Global Poverty*. Public Affairs.
- Becker, G. and Y. Rubinstein (2011). Fear and the Response to Terrorism: An Economic Analysis. Technical report, Centre for Economic Performance Working Paper No. 1079.
- Bhalotra, S. R. and A. Venkataramani (2012, December 19). *Shadows of the Captain of the Men of Death: Early Life Health Interventions, Human Capital Investments, and Institutions*.



- Black, D. A., S. G. Sanders, E. J. Taylor, and L. J. Taylor (2015). The Impact of the Great Migration on Mortality of African Americans: Evidence from the Deep South. *American Economic Review* 105, 477–503.
- Blinder, A. (2016). In Rural Alabama A Longtime Mistrust of Medicine Fuels A Tuberculosis Outbreak.
- Bogart, L. M., G. J. Wagner, and H. D. G. J. et al. (2016). Medical Mistrust among social network members may contribute to antiretroviral nonadherence in African Americans living with HIV. *Social Science & Medicine Available Online* 19 March 2016, 133–140.
- Boulware, L. E., L. A. Cooper, L. E. Ratner, T. A. LaVeist, and N. R. Powe (2003, July-August). Race and Trust in the Health Care System. *Public Health Reports* 118, 358–365.
- Boustan, L. and R. A. Margo (2014, December). Racial Differences in Health in Long-Run Perspective: A Brief Introduction. Working Paper 20765, National Bureau of Economic Research.
- Brandon, D. T., L. A. Isaac, and T. A. LaVeist (2005). The Legacy of Tuskegee and Trust in Medical Care: is Tuskegee Responsible for Race Differences in Mistrust of Medical Care? *Journal of the National Medical Association* 97(7), 951–956.
- Brandt, A. M. (1978). Racism and Research: The Case of the Tuskegee Syphilis Study. *The Hastings Center Report* 8(6), 21–29.
- Brandt, A. M. and L. R. Churchill (Eds.) (2000, July). *Tuskegee's Truths: Rethinking the Tuskegee Syphilis Study* (1 ed.). Studies in Social Medicine. The University of North Carolina Press.
- Byrd, M. and L. A. Clayton (2002, August). *An American Health Care Dilemma: Race Medicine and Healthcare in the United States, 1900-2000*, Volume II. Routledge.
- Carlson, E. D. and R. M. Chamberlain (2004). The Black White Perception Gap and Health Disparities. *Public Health Nursing* 21(4), 372–379.
- Cascio, E. and E. Washington (2014). Valuing the Vote: The Redistribution of Voting Rights and State Funds following the Voting Rights Act of 1965. *The Quarterly Journal of Economics* 129(1), 379–433.
- CDC (2001). HIV/AIDS in the United States.
- CDC (2010). Ten leading causes of death by age groups. Technical report, CDC.
- CDC (2014, December). Compressed Mortality File (CMF 1968-1988, Series 20, No. 2A, 2000) on CDC WONDER Online.
- Corbie-Smith, G., S. B. Thomas, M. V. Williams, and S. Moody-Ayers (1999). Attitudes and Beliefs of African Americans Toward Participation in Medical Research. *Journal of General Internal Medicine* 14(9), 537–546.
- Curtin, L. R. and R. J. Klein (1995, March). *Direct Standardization (Age-Adjusted Death Rates)* (6 ed.). US Department of Health and Human Services, Public Health Service, Centers for Disease Control and Prevention, National Center for Health Statistics.
- Cutler, D., W. Huang, and A. Lleras-Muney (2014, May). When Does Education Matter? The Protective Effect of Education for Cohorts Graduating in Bad Times. Working Paper 20156, National Bureau of Economic Research.

- Cutler, D., A. Lleras-Muney, and T. Vogl (2011). *The Oxford Handbook of Health Economics*, Chapter Socioeconomic status and health: Dimensions and mechanisms, pp. 124–163. Oxford University Press.
- Cutler, D. M. and A. Lleras-Muney (2012, January). Education and Health: Insights from International Comparisons. Working Paper 17738, National Bureau of Economic Research.
- Deaton, A. (2002). Policy Implications of the Gradient of Health And Wealth. *Health Affairs* 21(2), 13–30.
- Dixit, A. (2003). Trade Expansion and Contract Enforcement. *Journal of Political Economy* 111(6), 1293–1317.
- Do, Y., W. Carpenter, P. Spain, J. Clark, et al. (2010). Race, health access and physician trust among prostate cancer patients. *Cancer Causes Control* 21(1), 31–40.
- Dupas, P. (2011). Health Behavior in Developing Countries. *Annual Review of Economics* 3(1), 425–449.
- Fafchamps, M. (2006). Development and Social Capital. *The Journal of Development Studies* 42(7), 1180–1198.
- Feldhusen, A. E. (2000). The History of Midwifery and Childbirth in America: A Time Line.
- Freedman, T. (1998). "Why Don't They Come to Pike Street and Ask Us? " Black American Women's Health Concerns. *Social Science & Medicine* 47(7), 941–947.
- Gaston, G. B. and B. Alleyne-Green (2013). The Impact of African Americans' Beliefs About HIV Medical Care on Treatment Adherence: A Systematic Review and Recommendations for Interventions. *AIDS Behavior* 17, 31–40.
- Gentzkow, M., J. M. Shapiro, and M. Sinkinson (2014). United States Newspaper Panel, 1869-2004. Icpsr30261-v6, Inter-university Consortium for Political and Social Research [distributor], Ann Arbor, MI.
- Goodman-Bacon, A. (2015). *Public Insurance and Mortality: Evidence from Medicaid Implementation*.
- Green, B., R. Maisiak, M. Q. Qang, M. F. Britt, and N. Ebeling (1997). Participation in Health Education, Health Promotion, and Health Research by African Americans: Effects of the Tuskegee Syphilis Experiment. *Journal of Health Education* 28, 196–201.
- Greif, A. (1989). Reputation and coalitions in Medieval Trade: Evidence on the Maghribi Traders. *The journal of economic history* 49(04), 857–882.
- Guiso, L., P. Sapienza, and L. Zingales (2008). Alfred Marshall Lecture: Social Capital as Good Culture. *Journal of the European Economic Association* 6(2-3), 295–320.
- Gutsell, J. N. and M. Inzlicht (2010). Empathy constrained: Prejudice predicts reduced mental simulation of actions during observation of outgroups. *Journal of Experimental Social Psychology* 46(5), 841 – 845.
- Haines, M. (2010). Historical, Demographic, Economic, and Social Data: The United States, 1790-2002 Computer file. ICPSR 02896-v3. Technical report, Inter-university Consortium for Political and Social Research, Ann Arbor, MI.
- Halbert, C. H., K. Armstrong, O. Gandy, et al. (2006). Racial Differences in Trust in Health Care Providers. *Archives of Internal Medicine* 166(8), 896–901.

- Halbert, C. H., B. Weathers, E. Delmoo, et al. (2009). Racial Differences in Medical Mistrust among Men Diagnosed with Prostate Cancer. *Cancer* 115(11), 2553–2561.
- Hamilton, B., A. Hincapie, R. A. Miller, and N. W. Papageorge (2016). Innovation and Diffusion of Medical Treatment. Technical report, Working Paper.
- Hammond, W. P., D. Matthews, D. Mohottige, A. Agyemang, and G. Corbie-Smith (2010). Masculinity, Medical Mistrust, and Preventive Health Services Delays Among Community-Dwelling African-American Men. *Journal of General Internal Medicine* 25(12), 1300–1308.
- Heintzelman, C. (2003). The Tuskegee Syphilis Study and Its Implications for the 21st Century.
- Hertz, R. P., A. N. Unger, J. A. Cornell, and E. Saunders (2005). Racial Disparities in Hypertension Prevalence, Awareness and Management. *Archives of Internal Medicine* 165(18), 2098–2104.
- Holt-Lunstad, J., W. Birmingham, and B. Q. Jones (2008). Is There Something Unique about Marriage? The Relative Impact of Marital Status, Relationship Quality, and Network Social Support on Ambulatory Blood Pressure and Mental Health. *Annals of Behavioral Medicine* 35(2), 239–244.
- Hood, K. B., A. Hart, F. Belgrave, R. H. Tademy, and R. A. Jones (2012). The Role of Trust in Health Decision Making Among African American Men Recruited From Urban Barbershops. *Journal of the National Medical Association* 104, 351.
- Jackson, J. S., H. W. Neighbors, and G. Gurin (1979). National Survey of Black Americans.
- Jones, J. H. (1992, December). *Bad Blood, The Tuskegee Syphilis Experiment, New and Expanded Edition*. Free Press.
- Kaiser Family Foundation Fact Sheet (2007). The Health Status of African American Men in the United States. Technical report, Kaiser Family Foundation.
- Kayaniyil, S., S. Gravely-Witte, D. E. Stewart, et al. (2009). Degree and correlates of patient trust in their cardiologist. *Journal of evaluation in clinical practice* 15(4), 634–640.
- Keating, N., T. Gandhi, E. Orav, et al. (2004). Patient characteristics and experiences associated with trust in specialist physicians. *Archives of Internal Medicine* 164(9), 1015–1020.
- Knack, S. and P. Keefer (1997). Does social capital have an economic payoff? A cross-country investigation. *The Quarterly journal of economics* 112(4), 1251–1288.
- LaVeist, T. A., K. Nickerson, and J. Bowie (2000). Attitudes about racism, medical mistrust and satisfaction with care among African American and white cardiac patients. *Medical Care Research Review* 57(1), 146–61.
- Lichtenberg, F. (2002). The Effect of Medicare on Health Care Utilization and Outcomes. *Frontiers in Health Policy Research* 5(1), 27–52.
- London Health Observatory (2010). Calculating Life Expectancy and infant mortality rates—Mapping health inequalities across London—technical supplement. Technical report, London Health Observatory.
- Maddux, W. W. and M. B. Brewer (2005). Gender Differences in the Relational and Collective Bases for Trust. *Group Processes and Intergroup Relations* 8(2), 159–171.

- Mandell, G. L., J. E. Bennett, and R. Dolin (2009, October). *Mandell, Douglas, and Bennett's Principles and Practice of Infectious Diseases* (7 ed.), Volume 2. Churchill Livingstone.
- McCallum, J., A. Dhananjaya, L. Green, R. Katz, and B. Rivers (2006). Awareness and Knowledge of the U.S. Public Health Service Syphilis Study at Tuskegee: Implications for Biomedical Research. *Journal of HealthCare for the Poor and Underserved* 17(4), 716–733.
- Minnesota Population Center (2015). Integrated Health Interview Series: Version 6.11. Technical report, Minneapolis: University of Minnesota.
- Murphy, S. L., J. Xu, and K. D. Kochanek (2013). Deaths: Final Data for 2010. *National Vital Statistics Reports* 61(4), 1–118.
- National Center for Health Statistics (1977). National Medical Care Expenditure Survey, 1977. Technical report, Inter-university Consortium for Political and Social Research [distributor], 1986.
- National Center for Health Statistics (1985). U.S Decennial Life Tables for 1979-81 . *DHHS Pub. No. (PHS) 85-1150-1* 1(1), 1–37.
- NBC (1989). NBC News Poll: R.A.C.E.–Racial Attitudes and Consciousness Exam [USNBC1989-RACE].
- Nelson, K., K. Norris, and C. Mangione (2002). Disparities in the Diagnosis and Pharmacologic Treatment of High Serum Cholesterol by Race and Ethnicity: Data from the Third National Health and Nutrition Examination Survey. *Archives of Internal Medicine* 162(8), 929–935.
- Newkirk, V. (2016, June). A Generation of Bad Blood.
- Nunn, N. and L. Wantchekon (2011). The Slave Trade and the Origins of Mistrust in Africa. *American Economic Review* 101(7), 3221–52.
- Quinn, S. (1997). Belief in AIDS as a form of Genocide: Implications for HIV Prevention Programs for African Americans. *Journal of Health Education* 28, s6–s11.
- Robles, T. F. and J. K. Kiecolt-Glaser (2003). The Physiology of Marriage: Pathways to Health. *Physiology & Behavior* 79(3), 409 – 416. A Tribute to Paul MacLean: The Neurobiological Relevance of Social Behavior.
- Ronald Andersen and Ann Lu (1975). National Survey of Access to Medical Care 1975-1976. Technical report, Inter-university Consortium for Political and Social Research [distributor], 2013-05-31.
- Sandman, D., E. Simantov, and C. An (2000). Out of Touch: American Men and the Health Care System. Technical report, Commonwealth Fund Men's and Women's Health Survey Findings.
- Shavers, V., C. Lynch, and L. Burmeister (2000). Knowledge of the Tuskegee Study and its Impact on the Willingness to Participate in Medical Research Studies. *Journal of the National Medical Association* 92(12), 563–572.
- Shayo, M. and A. Zussman (2011). Judicial Ingroup Bias in the Shadow of Terrorism. *The Quarterly Journal of Economics* 126, 1447–1484.
- Silber, J. H., P. R. Rosenbaum, R. N. Ross, B. A. Niknam, J. M. Ludwig, W. Wang, A. S. Clark, K. R. Fox, M. Wang, O. Even-Shoshan, et al. (2014). Racial Disparities in Colon Cancer Survival: A Matched Cohort Study. *Annals of Internal Medicine* 161(12), 845–854.

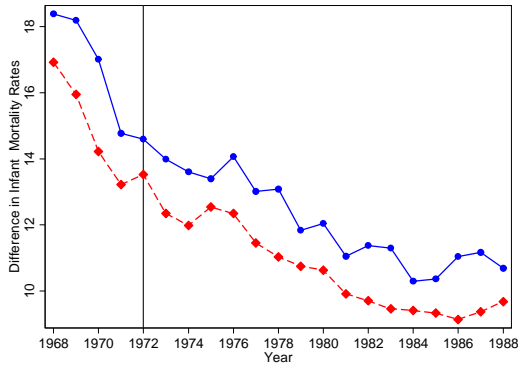
- Singer, T., B. Seymour, J. P. O'Doherty, K. E. Stephan, R. J. Dolan, and C. D. Frith (2006, January). Empathic neural responses are modulated by the perceived fairness of others. *Nature* 439(7075), 466–469.
- Smedley, B. D., A. Y. Stith, and A. R. Nelson (Eds.) (2003). *Unequal Treatment: Confronting Racial and Ethnic Disparities in Health Care (full printed version)*. Washington, DC: The National Academies Press.
- Smith, T., P. Marsden, M. Hout, and J. Kim (2015). General Social Surveys, 1972-2014. Cumulative file, The Roper Center for Public Opinion Research, University of Connecticut.
- Stewart, S. T., D. M. Cutler, and A. B. Rosen (2009). Forecasting the Effects of Obesity and Smoking on U.S. Life Expectancy. *New England Journal of Medicine* 361, 2252–2260.
- Tabellini, G. (2008). The Scope of Cooperation: Values and Incentives. *The Quarterly Journal of Economics* 123(3), 905–950.
- Thanakijborisut, Y. (2015). Estimating Price Elasticity of Demand for Medical Care Services in Thailand. *International Journal of Business and Economics*, 19–39.
- Thom, T., N. Haase, W. Rosamond, V. Howard, J. Rumsfeld, T. Manolio, Z.-J. Zheng, K. Flegal, C. O'Donnell, S. Kittner, D. Lloyd-Jones, D. C. Goff, and Y. Hong (2006). Heart Disease and Stroke Statistics. *Circulation* 113, e85–e151.
- Thomas, S. B. and S. C. Quinn (1991, November). The Tuskegee Syphilis Study, 1932 to 1972: Implications for HIV Education and AIDS Risk Education Programs in the Black Community. *American Journal of Public Health* 81(11), 1500–1501.
- Thomas, S. L. (2013). Understanding the Predictors of Patient Trust and Its Role in Utilization and Outcomes. Technical report, University of Alabama-Birmingham.
- Thomasson, M. and J. Treber (2004). *From Home to Hospital: The Evolution of Childbirth in the United States, 1927-1940*.
- Tuskegee Syphilis Study Legacy Committee (Ed.) (1996). *Final Report of the Tuskegee Syphilis Study Legacy Committee*, <http://exhibits.hsl.virginia.edu/badblood/report/>.
- University of Chicago Center for Health Administration Studies National Opinion Research (1963). Survey of Health Services Utilization and Expenditures, 1963.
- University of Chicago Center for Health Administration Studies National Opinion Research (1970). Survey of Health Services Utilization and Expenditures, 1970. Technical report, Inter-university Consortium for Political and Social Research [producer and distributor], 1981.
- US Census Bureau (1970). Census of Population and Housing Vol 1 Characteristics of the Population. Technical report, US Census Bureau.
- U.S. Department of Health and Human Services (1987). National Medical Expenditure Survey, 1987: Household Survey, Expenditures, Sources of Payment, and Population Data [Public Use Tape 18]. Technical report, Public Health Service.
- U.S. Department of Health Education and Welfare (1973). Utilization of Short-Stay Hospitals Summary of Non-Medical Statistics.

- Vaidya, V., G. Partha, and M. Karmakar (2012). Gender Differences in Utilization of Preventive Care Services in the United States. *Journal of Women's Health* 21(2).
- Viera, A. J., J. M. Thorpe, and J. M. Garrett (2006). Effects of sex, age, and visits on receipt of preventive health services: a secondary analysis of national data. *BMC Health Services Research* 6, 1–8.
- White, R. M. (2005). Misinformation and Misbeliefs in the Tuskegee Study of Untreated Syphilis Fuel Mistrust in the Healthcare System. *Journal of the National Medical Association* 97(11), 1566–73.
- Wiltshire, J., S. D. Person, and J. Allison (2011, September/October). Exploring Differences in Trust in Doctors Among African American Men and Women. *Journal of the National Medical Association* 103(9), 845–851.
- Zheng, H. and C. Zhou (2008). *The Impact of Hospital Integration on Black-White Differences in Mortality: A Case Study of Motor Vehicle Accident Death Rates.*

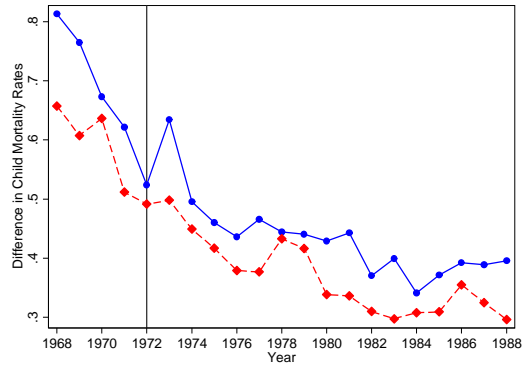
# 10 Figures

FIGURE 1: BLACK-WHITE MORTALITY DIFFERENCES BY AGE AND SEX

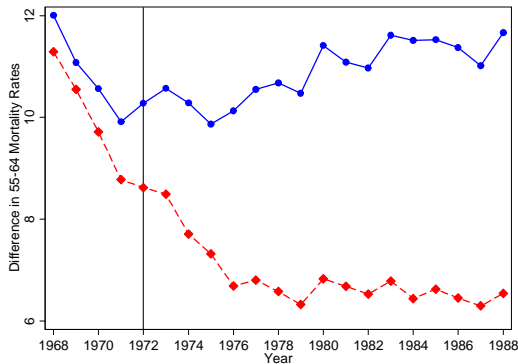
Panel A. Infant Mortality Rate



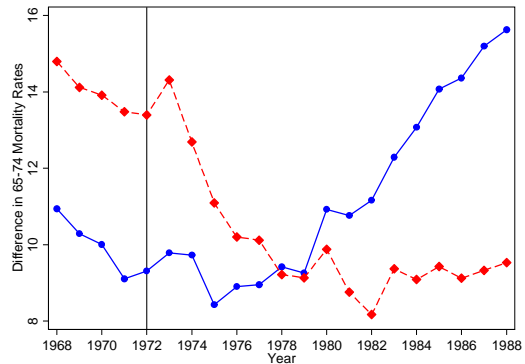
Panel B. Child Mortality Rate



Panel C. 55-64 Mortality Rate



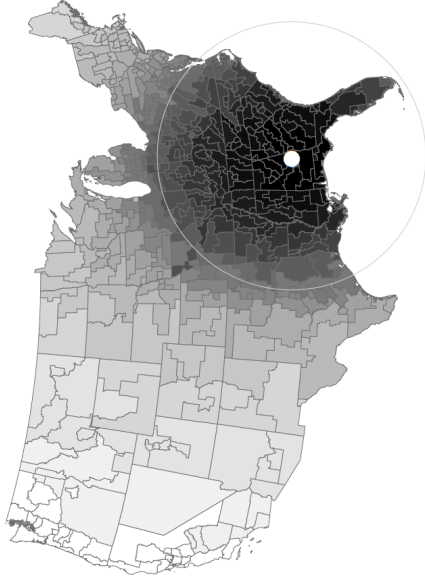
Panel D. 65-74 Mortality Rate



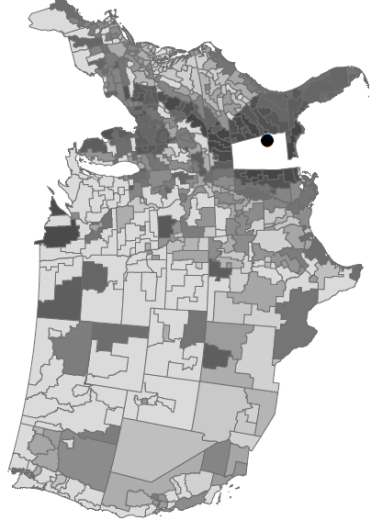
*Notes:* The data are from the CDC compressed mortality files and represent the black-white difference in age-specific mortality rates. Each mortality rate is calculated by dividing the number of deaths in the relevant population by the at-risk population (in thousands). The solid (blue) line represents the difference for males, and the dotted (red) line represents the difference for females. The vertical line represents the year “The Tuskegee Study of Untreated Syphilis in the Negro Male” was disclosed. For additional figures, including plots of all other age-specific mortality rates and South only, see the Appendix.

FIGURE 2: PROXIMITY MEASURES

Panel A. Distance to Tuskegee



Panel B. Fraction Black Migrants from Alabama



Notes: Figure 2 plots proximity measures. Panel (A) represents distance from Macon County from the centroid of each SEA calculated using ArcGIS proximity tools. Panel (B) represents the fraction of black migrants from Alabama by SEA calculated using the 1940 census. Darker tones reflect closer proximity to Tuskegee or a higher fraction of Alabama migrants using 20 natural breaks. The white open circle in Panel (A) demarcates approximately 1000 kilometer radius from Macon County. The white closed circle in Panel (A) and black closed circle in Panel (B) represent Macon County.

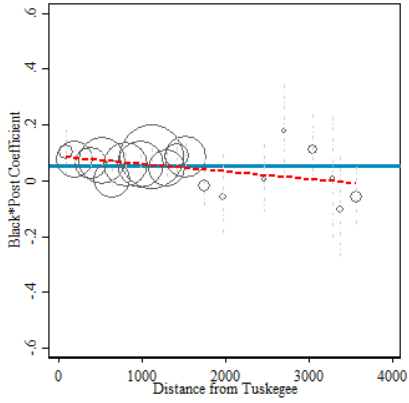


FIGURE 3: DIFFERENCE-IN-DIFFERENCES COEFFICIENTS AND GEOGRAPHIC GRADIENTS

Panel A.  $\beta$ - All Male Sample

Average DD Coefficient: 0.052

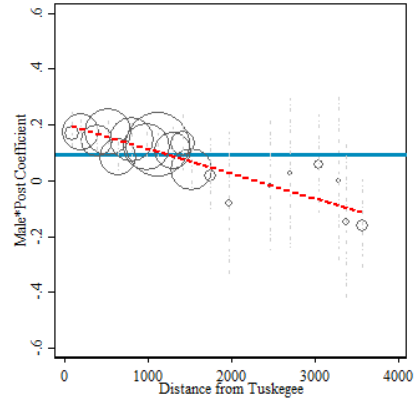
95% CI: [0.033, 0.071]



Panel B.  $\beta$  - All Black Sample

Average DD Coefficient: 0.091

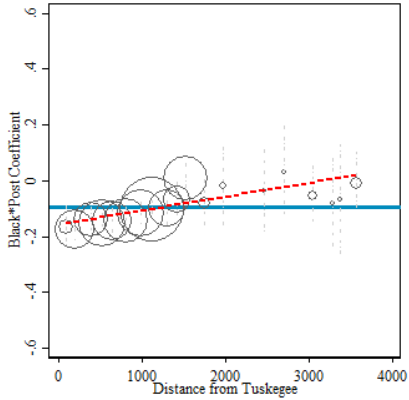
95% CI: [0.064, 0.117]



Panel C.  $\beta$  - All Female Sample

DD Coefficient: -0.095

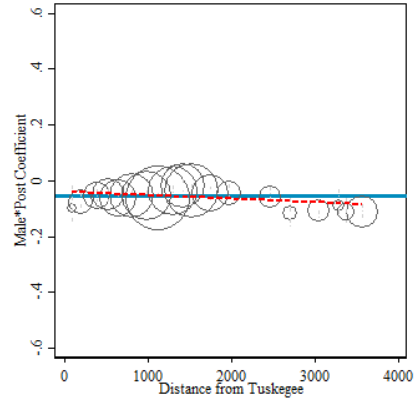
95% CI: [-0.115, -0.074]



Panel D.  $\beta$  - All White Sample

DD Coefficient: -0.056

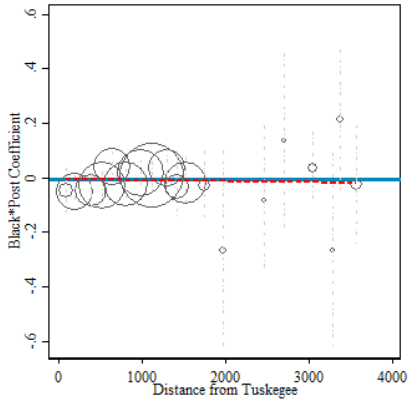
95% CI: [-0.066,-0.046]



Panel E.  $\beta$ - All Male Sample with False Post

DD Coefficient: -0.007

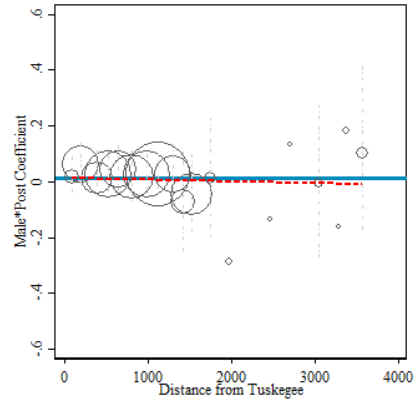
95% CI: [-0.040,0.027]



Panel F.  $\beta$ - All Black Sample with False Post

DD Coefficient: 0.013

95% CI: [-0.036,0.063]

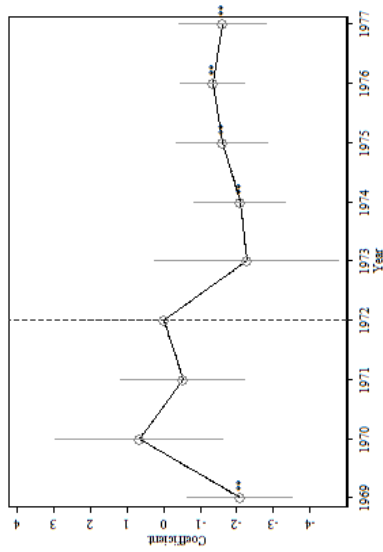


*Notes:* These figures plot  $\beta$  coefficients from equation (1) estimated on various demographic group samples (all-male, all-black, all-white and all-female) as indicated by the figure headings and further subdivided into distance bins from Tuskegee. Panels (A) and (B) plot  $\beta$  coefficients on black\*male\*post in the all-male and all-black sample, respectively. Panels (C) and (D) plot  $\beta$  coefficients on white\*male\*post and black\*female\*post in the all-white and all-female sample, respectively. Panels (E) and (F) plot the same coefficients as in Panels (A) and (B), however, the time period of the analysis is restricted to the pre-1973 period with all observations after 1969 constituting the “post” period. SEAs were grouped into  $K$  bins of 150 kilometers of distance from Macon County, Alabama each bin yielding a  $\beta^k$ . Bins in the middle of the country with less than 100,000 black men were combined, and confidence intervals that were greater than 0.6 in absolute value were omitted so that the scale could be the same for all figures. Regressions for a given bin were weighted by the relevant SEA population (e.g. 45-74 year old males for the all-male sample), and the size of the bubble reflects the total weight within each distance bin. The outcome variable for each regression is the log of age-adjusted chronic mortality. Each  $\beta^k$  coefficient is indicated by a bubble and the dashed vertical lines connected to the bubble denote its 95% confidence interval. The thick (blue) line depicts the average  $\beta$  coefficient across the entire subsample. This average estimate and its 95% confidence interval are provided in the figure subheading. The line of best fit between the  $\beta$  coefficients and distance from Tuskegee is drawn as a dashed (red) line. Data are from the CDC compressed mortality files and cover the period 1968 to 1987 unless otherwise indicated. Rates are constructed biennially, and post is an indicator equal to 1 in the years following 1972/1973 for Panels (A) through (D). Placebo post is an indicator equal to 1 in the years 1970/1971 and covers the period 1968 to 1973. See main text and Appendix for further details on the data source and variable construction.

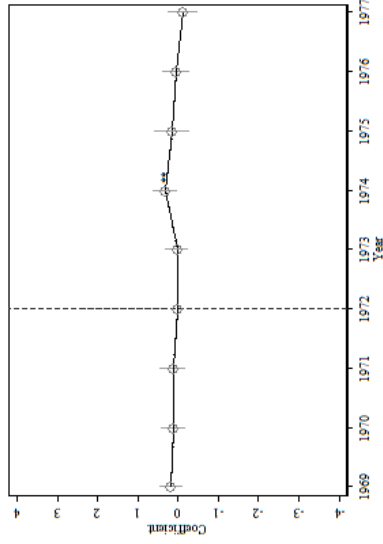
FIGURE 4: EVENT STUDIES

Dependent Variable: *Utilization (Physician Interactions in Past 12 months)*

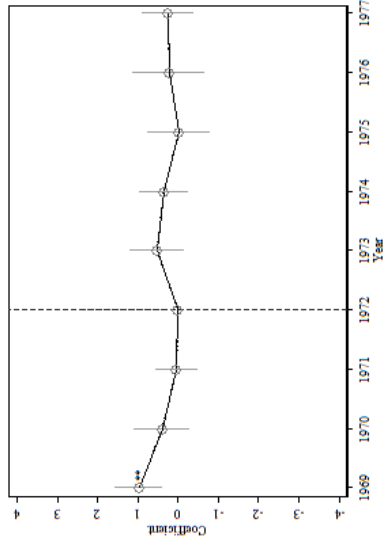
Panel A.  $\beta_1$  Coefficient



Panel B.  $\beta_2$  Coefficient

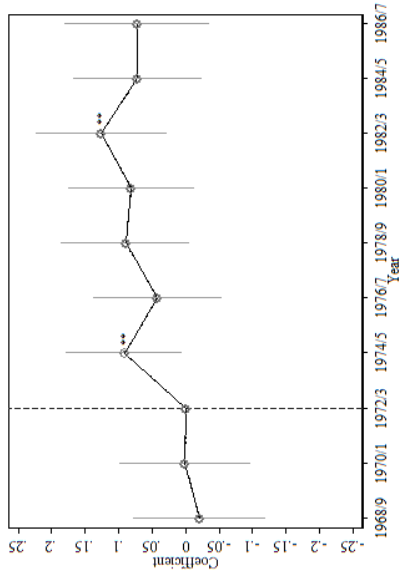


Panel C.  $\beta_3$  Coefficient

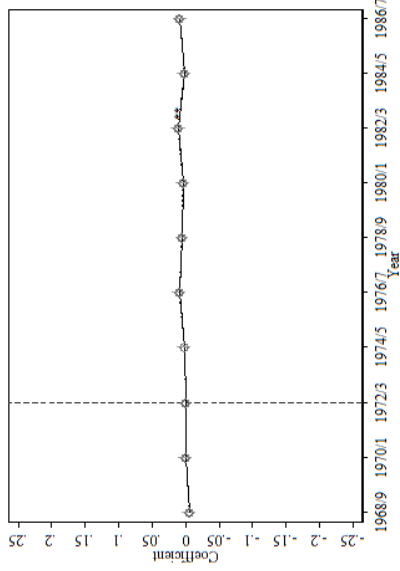


Dependent Variable: *Mortality (Log Age-Adjusted Chronic)*

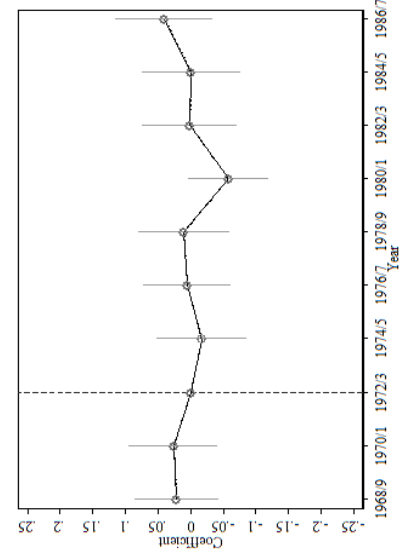
Panel D.  $\beta_1$  Coefficient



Panel E.  $\beta_2$  Coefficient



Panel F.  $\beta_3$  Coefficient

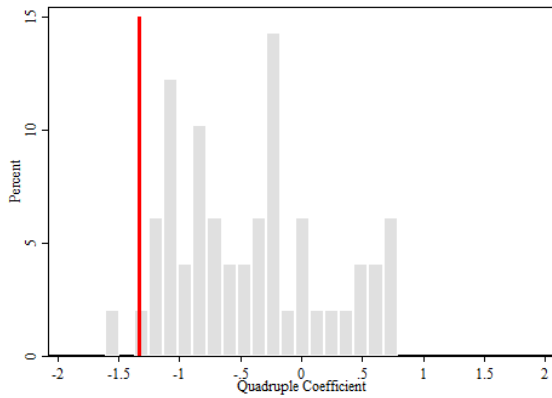


*Notes:* Event study coefficients from versions of equation (4). Panel (A) plots the  $\beta_1$  coefficients on the interaction of proximity, an indicator for black, an indicator for male, and a year indicator. Panel (B) plots  $\beta_2$  coefficients, the interaction of proximity, an indicator for male, and a year indicator. Panel (C) plots  $\beta_3$  coefficients, the interaction of proximity, an indicator for black, and a year indicator. The dependent variable for Panels (A) through (C) is the number of outpatient visits within the last 12 months. The sample includes non-veteran black and white men and women ages 45-74 and covers the period 1969-1977. Data are from the harmonized version of the National Health Interview Survey (NHIS) available from IPUMS and merged with restricted identifiers for use in the RDC. Panels (D) – (F) plot the  $\beta_1$ ,  $\beta_2$ , and  $\beta_3$  coefficients for the outcome of (log) age-adjusted chronic mortality constructed biennially. Mortality data are from the compressed mortality files from the CDC and cover the period 1968 to 1987. The unit of observation is the state economic area (SEA), and the sample includes black and white men and women ages 45-74 who died in the United States. Each estimate is relative to either 1972 (vertical dashed line in Panels (A) – (C)) or 1972/1973 (vertical dashed line in Panels (D) – (F)). See Table 1 notes, text and Appendix for further details.

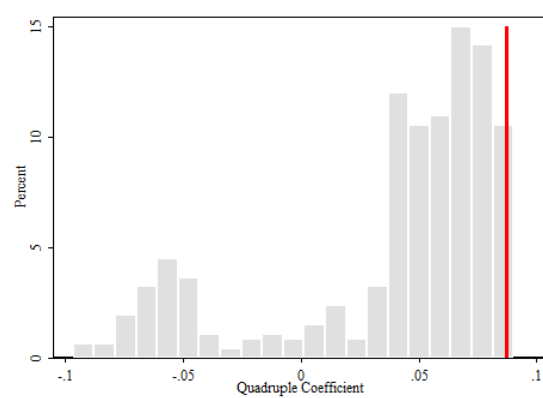
\*\* p<0.05.

FIGURE 5: PERMUTATION TEST

Panel A. Number Outpatient Visits



Panel B. Log Age-Adjusted Chronic Mortality



*Notes:* Frequency of the “false”  $\beta_1$  coefficient estimated using distance from every other state (exclusive of Alabama) or SEA (exclusive of the one containing Macon County) in the sample and estimating equation (2) in Panel (A) or equation (3) in Panel (B). The vertical line denotes  $\beta_1$  from baseline estimates using the true treatment distance (to Macon County, Alabama) as reported in Table 1.

## 11 Tables

**TABLE 1: BASELINE ESTIMATES UTILIZATION AND MORTALITY**

	(1)	(2)	(3)	(4)	(5)	(6)	(7)	(8)
	Dependent variable:							
	<i>Number Outpatient Visits</i>	<i>Any Outpatient Visit</i>	<i>Any Hospital Admission</i>	<i>Number Nights in Hospital</i>	<i>Log Age Adjusted All-Cause Mortality</i>	<i>Level Age Adjusted Cause Mortality</i>	<i>Log Age Adjusted Chronic Mortality</i>	<i>Level Age Adjusted Chronic Mortality</i>
<i>Mean of Dep Var for Black Men before 1973</i>	4.10	0.62	0.14	2.26	3.42	30.68	3.14	23.37
	<b>PANEL A---Utilization</b>							
$P_j^{*post} * black_r * male_g$	-1.328*** (0.354)	-0.037*** (0.007)	-0.015 (0.013)	0.738** (0.363)	0.071*** (0.023)	2.142** (0.851)	0.087*** (0.022)	1.566** (0.770)
$P_j^{*post} * male_g$	-0.022 (0.080)	0.004 (0.005)	0.004 (0.004)	0.067 (0.075)	0.005* (0.003)	-0.045 (0.047)	0.008*** (0.003)	-0.031 (0.040)
$P_j^{*post} * black_r$	-0.052 (0.110)	0.011* (0.006)	0.006 (0.004)	0.123 (0.104)	-0.017 (0.019)	-0.765 (0.658)	-0.018 (0.020)	-0.682 (0.663)
Fixed Effects	State-Year, Race-Gender-Year, Race-Gender-State	State-Year, Race-Gender-Year, Race-Gender-State	SEA-Year, Race-Gender-Year, Race-Gender-SEA					
Observations	220,954	220,954	220,954	220,954	17,737	18,600	17,611	18,600
No. Clusters	49	49	49	49	465	465	465	465
Adj R-squared	0.017	0.025	0.010	0.010	0.812	0.303	0.804	0.226

*Notes:* OLS estimates of equations (2) and (3). Panel (A) presents outcomes on utilization. Utilization data are from the harmonized version of the National Health Interview Survey (NHIS) available from IPUMS and merged with restricted identifiers for use in the Restricted Data Center (RDC) and cover the period 1969-1977. Post is an indicator variable equal to 1 in the years following 1972. The unit of observation is the individual, and the sample includes non-veteran black and white men and women ages 45-74. In column (1) the outcome is the number of outpatient physician interactions in the past 12 months. In column (2) the outcome is an indicator variable for any outpatient physician visit in the last 12 months. In columns (3) and (4) the outcome variables are any hospital admission and the number of nights in a hospital, respectively. Panel (B) presents outcomes on mortality. Mortality data are from the compressed mortality files from the CDC and cover the period 1968-1987. The unit of observation is a demographic group within a state economic area (SEA) and the sample includes black and white men and women ages 45-74 who died in the United States. Rates are constructed biennially, and post is an indicator equal to 1 in the years following 1972/1973. In columns (5) and (6) the outcomes are the log and level of age-adjusted mortality from all causes, respectively. In columns (7) and (8) the outcomes are the log and level of age-adjusted chronic mortality, respectively. In addition to the listed fixed effects, utilization regressions control for age, education, marital status, urbanization, whether the respondent has a telephone and income. Mortality regressions include controls for the log of total health (e.g. Medicaid and Medicare) expenditures, the log of Social Security expenditures, the density of hospitals, hospital beds and physicians and the presence of community health centers. Regressions using NHIS data are weighted using provided survey weights. Standard errors are clustered at the state level or SEA level.

\*\*\* $p < 0.01$ , \*\*  $p < 0.05$  and \* $p < 0.10$ , respectively.

**TABLE 2: HETEROGENEOUS EFFECTS, UTILIZATION**

	(1)	(2)	(3)	(4)	(5)	(6)	(7)	(8)
	Dependent Variable: Number Outpatient Visits							
	By Income Level		By Educational Status		By Prevalence Black Doctors		By Marital Status	
	<i>income &gt; black male median</i>	<i>income &lt;= black male median</i>	<i>educ &gt; black male median</i>	<i>educ &lt;= black male median</i>	<i>black MD &gt; median</i>	<i>black MD &lt;= median</i>	<i>married</i>	<i>unmarried</i>
$P_j \text{post}_t$	-0.546	-1.725**	-0.061	-2.801***	-1.359***	-2.052	-1.398***	-1.665
* $\text{black}_t \text{*male}_g$	(0.548)	(0.705)	(0.409)	(0.839)	(0.373)	(1.460)	(0.326)	(1.061)
$P_j \text{post}_t \text{*male}_g$	0.060	-0.049	-0.013	-0.130	0.042	-0.110	0.029	-0.188
	(0.084)	(0.184)	(0.092)	(0.294)	(0.082)	(0.238)	(0.106)	(0.240)
$P_j \text{post}_t \text{*black}_t$	-0.150	-0.211*	-0.465**	0.468	-0.019	-0.566	0.419**	-0.511**
	(0.221)	(0.108)	(0.215)	(0.617)	(0.115)	(0.726)	(0.204)	(0.191)
Fixed Effects	State-Year, Race-Gender-Year, Race-Gender-State							
Observations	143,554	77,400	178,756	42,198	176,032	44,922	160,335	60,619
No. Clusters	49	49	49	49	25	24	49	49
Adj R-squared	0.013	0.03	0.014	0.036	0.016	0.017	0.014	0.030

Notes: OLS estimates of equations (2) and (3). Panel (A) presents outcomes on utilization. Utilization data are from the harmonized version of the National Health Interview Survey (NHIS) available from IPUMS and merged with restricted identifiers for use in the Restricted Data Center (RDC) and cover the period 1969-1977. Post is an indicator variable equal to 1 in the years following 1972. The unit of observation is the individual, and the sample includes non-veteran black and white men and women ages 45-74. In column (1) the outcome is the number of outpatient physician interactions in the past 12 months. In column (2) the outcome is an indicator variable for any outpatient physician visit in the last 12 months. In columns (3) and (4) the outcome variables are any hospital admission and the number of nights in a hospital, respectively. Panel (B) presents outcomes on mortality. Mortality data are from the compressed mortality files from the CDC and cover the period 1968-1987. The unit of observation is a demographic group within a state economic area (SEA) and the sample includes black and white men and women ages 45-74 who died in the United States. Rates are constructed biennially, and post is an indicator equal to 1 in the years following 1972/1973. In columns (5) and (6) the outcomes are the log and level of age-adjusted mortality from all causes, respectively. In columns (7) and (8) the outcomes are the log and level of age-adjusted chronic mortality, respectively. In addition to the listed fixed effects, utilization regressions control for age, education, marital status, urbanization, whether the respondent has a telephone and income. Mortality regressions include controls for the log of total health (e.g. Medicaid and Medicare) expenditures, the log of Social Security expenditures, the density of hospitals, hospital beds and physicians and the presence of community health centers. Regressions using NHIS data are weighted using provided survey weights. Standard errors are clustered at the state level or SEA level.

\*\*\*p<0.01, \*\* p<0.05 and \*p<0.10, respectively.



**TABLE 3: ALTERNATIVE MEASURES OF PROXIMITY, ROBUSTNESS CHECKS**

	(1)	(2)	(3)	(4)	(5)	(6)	(7)	(8)		
	Dependent variable:									
	<i>Number Outpatient Visits</i>				<i>Log Age-Adjusted Chronic Mortality</i>					
	<i>Level Age-Adjusted Child Mortality</i>									
	Migrant Treatment	South Only	Kids (Placebo)	Migrant Treatment	South Only	Kids (Placebo)	Migrant Treatment	Kids (Placebo)		
	<b>PANEL A---Utilization</b>									
$P_j * post_t * black_r * male_g$		-1.794*	(1.027)	-0.144	(0.149)		0.066**	(0.033)	0.171	(0.548)
$P_j * post_t * male_g$		0.417	(0.423)	0.038	(0.046)		0.003	(0.012)	-0.019*	(0.010)
$P_j * post_t * black_r$		0.794*	(0.434)	0.186	(0.143)		-0.040	(0.027)	-0.386***	(0.125)
	<b>PANEL B---Mortality</b>									
$Migrant_j * post_t * black_r * male_g$	-10.18***	(3.307)	-8.356**	(3.351)			0.220***	(0.072)	0.140**	(0.069)
$Migrant_j * post_t * male_g$	0.838	(1.306)	0.099	(1.715)			0.016	(0.018)	0.015	(0.023)
$Migrant_j * post_t * black_r$	2.775	(1.755)	3.071	(1.981)			-0.090	(0.069)	-0.092*	(0.048)
Fixed Effects	State-Year , Race-Gender-Year, Race-Gender-State				SEA-Year, Race-Gender-Year, Race-Gender-SEA					
Observations	216,984	65,495	69,465	209,884	17,103	6,973	7,413	18,600		
No. Clusters	48	16	17	49	451	175	186	465		
Adj R-squared	0.017	0.016	0.016	0.043	0.799	0.920	0.923	-0.027		

*Notes:* OLS estimates of equations (2) and (3). Panel (A) presents outcomes for outpatient visits. Utilization data are from the harmonized version of the National Health Interview Survey (NHIS) available from IPUMS and merged with restricted identifiers for use in the Restricted Data Center (RDC) and cover the period 1969-1977. Post is an indicator variable equal to 1 in the years following 1972. In columns (1) through (4) the outcome is the number of outpatient physician interactions in the past 12 months. Columns (1) and (2) use an alternative measure of proximity – the fraction of black migrants from Alabama – instead of geographic proximity to Tuskegee. Alabama is excluded from these regressions. Column (2) is identical to column (1), but restricts the sample to the South. Columns (3) and (4) both use geographic proximity to Tuskegee as an instrument (as in Table 1). Column 3 restricts the sample to the South, and column (4) uses the placebo outcome of children’s utilization. Panel (B) presents outcomes for mortality. Mortality data are from the compressed mortality files from the CDC and cover the period 1968 to 1987. The unit of observation is a demographic group within a state economic area (SEA) and the sample includes black and white men and women ages 45-74 who died in the United States. Rates are constructed biennially, and post is an indicator equal to 1 in the years following 1972/1973. In columns (5) and (6) the outcome is log age-adjusted chronic mortality, and fraction of black migrants from Alabama is used as the measure of proximity. Column (6) repeats the specification in (5), restricting the sample to the South. Column (7) restricts the sample to the South and uses geographic distance to Tuskegee. In column (8), the outcome variable is the level of age-adjusted child mortality. Regressions using NHIS data are weighted using provided survey weights. Standard errors are clustered at the state level or SEA level.

\*\*\* $p < 0.01$ , \*\* $p < 0.05$  and \* $p < 0.10$ , respectively.

**TABLE 4: EFFECT OF TUSKEGEE ON BELIEFS ABOUT MEDICAL CARE**

	(1)	(2)	(3)
<i>Outcome</i>	<i>Medical Mistrust</i>	<i>Deny Treatment</i>	<i>General Mistrust</i>
$P_j * \text{black}_r * \text{male}_g$	0.177** (0.070)	0.167 (0.120)	-0.052 (0.171)
$P_j * \text{male}_g$	-0.016 (0.029)	-0.007 (0.036)	-0.008 (0.043)
$P_j * \text{black}_r$	-0.050 (0.046)	-0.028 (0.114)	-0.066 (0.054)
Fixed Effects	State <sub>1998</sub> , Race*Gender		
Observations	806	806	806
R-squared	0.085	0.109	0.114
No. Clusters	36	36	36

*Notes:* OLS estimates of equation (4). The data are from the General Social Survey for the year 1998. The sample contains black and white males and females at least 10 years old in 1972. The outcome variable for column (1) is whether the respondent disagrees with the statement that doctors can be trusted. The outcome variable in column (2) is whether the respondent believes they will be denied needed treatment by the medical profession. The outcome variable in column (3) is general mistrust (whether people, in general, can be trusted). In addition to the controls listed above, every specification includes indicator variables for age categories, marital status, state of current residence fixed effects, and indicators for being black, male, and the interaction. Standard errors are clustered at the state of residence level.

\*\*\*p<0.01, \*\*p<0.05, \*p<0.10, respectively.

**TABLE 5: ALL MALE SAMPLE, VETERANS VS. NON-VETERANS**

	(1)	(2)	(3)	(4)
<i>Outcome</i>	<i>Number Outpatient Visits</i>	<i>Any Outpatient Visit</i>	<i>Any Hospital Admission</i>	<i>Number Nights in Hospital</i>
$P_j * post_t * black_r * nonvet_g$	-1.161*** (0.347)	-0.040*** (0.009)	-0.027*** (0.007)	-0.417 (0.312)
$P_j * post_t * nonvet_g$	0.146** (0.072)	0.004 (0.005)	0.002 (0.003)	0.051 (0.056)
$P_j * post_t * black_r$	-0.592*** (0.179)	-0.024** (0.011)	-0.012 (0.010)	0.280 (0.247)
Fixed Effects	State-Year , Race-Gender-Year, Race-Gender-State			
Observations	135,635	135,635	135,635	135,635
No. Clusters	49	49	49	49
R-squared	0.020	0.023	0.016	0.014

*Notes:* OLS estimates of equation (2) testing differences between “experienced” (veteran) and “less experienced” (non-veteran) males in response to the disclosure of the Tuskegee study. Utilization data are from the harmonized version of the National Health Interview Survey (NHIS) available from IPUMS and merged with restricted identifiers for use in the Restricted Data Center (RDC) and cover the period 1969-1977. Post is an indicator variable equal to 1 in the years following 1972. The unit of observation is the individual, and the sample includes non-veteran and veteran black and white men ages 45-74. The outcome varies across columns and is given by the column heading. In addition to the listed fixed effects and controls in the table, individual-level controls in every specification for utilization include indicator variables for educational status, income, age, marital status, telephone ownership, and rural/urban status. Standard errors are clustered at the state level.

\*\*\*p<0.01 ,\*\* p<0.05 and \*p<0.10, respectively.